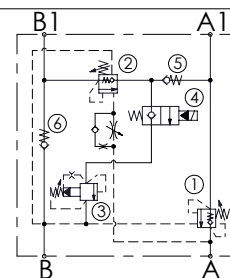


Dimensions: mm [inches]



## SPECIFICATIONS

<b>Max. operating pressure:</b>	<b>350 bar</b> (5000 psi)
<b>Rated flow:</b>	<b>100 l/min</b> (26 gpm)
<b>Manifold:</b>	<b>Aluminium</b>
<b>Weight:</b>	<b>4,63 kg</b> (10,21 lbs)
<b>Contamination class to ISO 4406:</b> See technical spec.	
<b>MTTF<sub>d</sub>:</b>	<b>150 years</b>

## NOTES

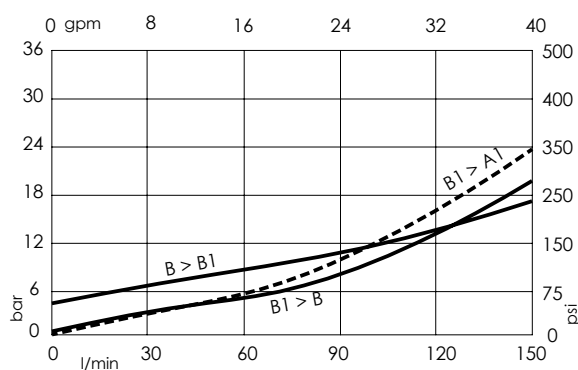
**Setting:** at least 1.3 times the load induced pressure.

**Designed for truck mounted cranes.**

**See chapter 21.00.000 for coils.**

**For other configurations/quick codes not available in this catalogue page please consult factory**

## CURVES



## ORDERING CODES

Quick code	Description	Pilot ratio	Main ports size	Standard setting Q=5 l/min (1,3 gpm)	Adjustment range	Pressure increase
MB000476	MRDN-100-ZLNV-04-G34-N210	4:1	A,A1,B,B1 : <b>G3/4"</b>	① ② 350 bar (5000 psi) ③ 350 bar (5000 psi)	① ② 100-350 bar (1400-5000 psi) ③ 140-350 bar (2000-5000 psi)	① ② 103 bar/turn (1500 psi/turn) ③ 114 bar/turn (1700 psi/turn)