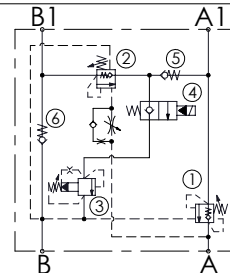


Dimensions: mm [inches]



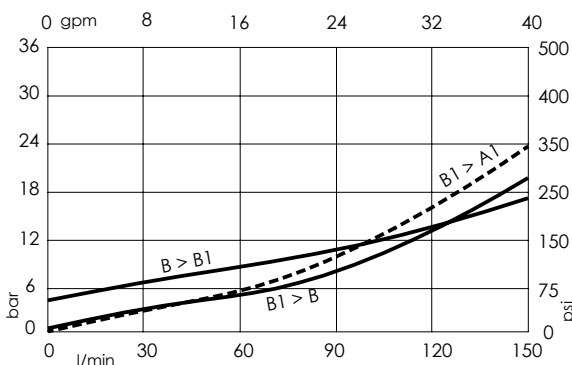
SPECIFICATIONS

Max. operating pressure:	350 bar (5000 psi)
Rated flow:	100 l/min (26 gpm)
Manifold:	Aluminium
Weight:	4,63 kg (10,21 lbs)
Contamination class to ISO 4406:	See technical spec.
MTTF _a :	150 - 1200 years: See technical spec.

NOTES

- Setting: at least 1.3 times the load induced pressure.
- Designed for truck mounted cranes.
- See chapter 21.00.000 for coils.
- For other configurations/quick codes not available in this catalogue page please consult factory

CURVES



ORDERING CODES

Quick code	Description	Pilot ratio	Main ports size	Standard setting Q=5 l/min (1,3 gpm)	Adjustment range	Pressure increase
MB000476	MRDN-100-ZLNV-04-G34-N210	4:1	A,A1,B,B1 : G3/4"	①② 350 bar (5000 psi) ③ 350 bar (5000 psi)	①② 100-350 bar (1400-5000 psi) ③ 140-350 bar (2000-5000 psi)	①② 103 bar/turn (1500 psi/turn) ③ 114 bar/turn (1700 psi/turn)