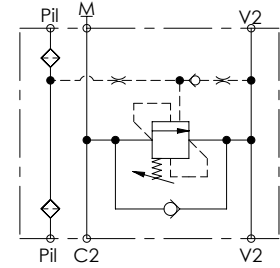
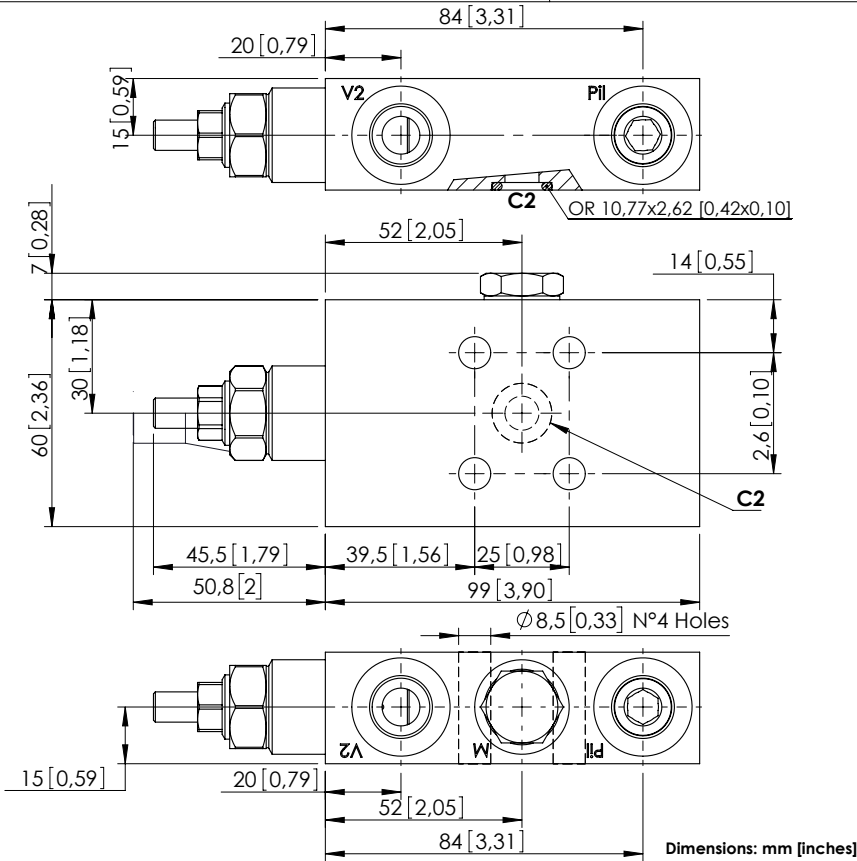


# MBSN-060-ZAPF

SINGLE ACTING  
FLANGED



## SPECIFICATIONS

Max. operating pressure:	350 bar (5000 psi)
Rated flow:	60 l/min (16 gpm)
Manifold:	Steel
Weight:	0,56 kg (1,23 lbs)
Contamination class to ISO 4406:	See technical spec.
MTTFa:	150 - 1200 years: See technical spec.

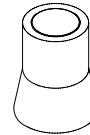
## NOTES

Setting: at least 1.3 times the load induced pressure.

Operative pilot ratio: 2,1:1

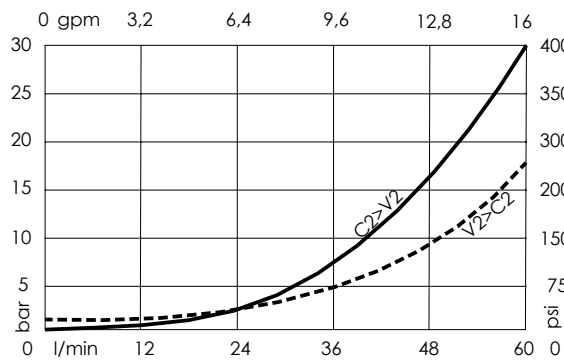
For other configurations/quick codes not available in this catalogue page please consult factory

## SEALING CAP



Ordering code:  
AT000020

## CURVES



## ORDERING CODES

Quick code	Description	Pilot ratio	Ports	Standard setting Q=5 l/min (1,3 gpm)	Adjustment range	Pressure increase
MB000461	MBSN-060-ZAPF-02-G38-N350	4:1	V2,P11: G 3/8" M: M12x1,5 C2: Ø9	340 bar (4900 psi)	100-350 bar (1500-5000 psi)	138 bar/turn (2000 psi/turn)