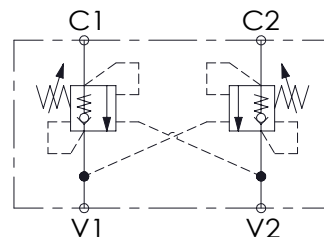


**MBDN-040-LBNN**

 ATLANTIC  
Fluid Tech

Max. operating pressure:	350 bar (5000 psi)
Rated flow:	40 l/min (11 gpm)
Manifold:	Aluminium
Weight:	0,72 kg (1,59 lbs)
Contamination class to ISO 4406: See technical spec.	
MTTF <sub>d</sub> :	150 years

## CURVES

The graph plots pressure drop (bar and psi) against flow rate (l/min and gpm) for a 100 mm diameter pipe. The solid line represents the  $C_2 \cdot v^2$  relationship, and the dashed line represents the  $v^2 - C_2$  relationship. Both curves show an increase in pressure drop with increasing flow rate, with  $C_2 \cdot v^2$  being significantly higher than  $v^2 - C_2$  at higher flow rates.

Flow Rate (l/min)	Flow Rate (gpm)	$C_2 \cdot v^2$ (bar)	$C_2 \cdot v^2$ (psi)	$v^2 - C_2$ (bar)	$v^2 - C_2$ (psi)
0	0	0	0	0	0
8	2.2	~1	~1.5	~0.5	~0.7
16	4.4	~4	~6	~1.5	~2.2
24	6.6	~10	~15	~3.5	~5.0
32	8.8	~20	~30	~6.5	~9.3
40	11	~32	~46	~10	~14.3

Quick code	Description	Pilot ratio	Main ports size	Standard setting Q=5 l/min (1.3 gpm)	Adjustment range	Pressure increase
MB000410	MBDN-040-ZBNN-04-G38-N350	4,1:1	V1,V2: G3/8" C1,C2: Ø 7	350 bar (5000 psi)	100-350 bar (1400-5000 psi)	184 bar/turn (2700 psi/turn)
MB000411	MBDN-040-ZBNN-04-G38-N200	4,1:1	V1,V2: G3/8" C1,C2: Ø 7	200 bar (2900 psi)	60-210 bar (900-3000 psi)	83 bar/turn (1200 psi/turn)
MB000412	MBDN-040-ZBNN-07-G38-N350	7,5:1	V1,V2: G3/8" C1,C2: Ø 7	350 bar (5000 psi)	100-350 bar (1400-5000 psi)	138 bar/turn (2000 psi/turn)
MB000413	MBDN-040-ZBNN-07-G38-N200	7,5:1	V1,V2: G3/8" C1,C2: Ø 7	200 bar (2900 psi)	60-210 bar (900-3000 psi)	80 bar/turn (1200 psi/turn)