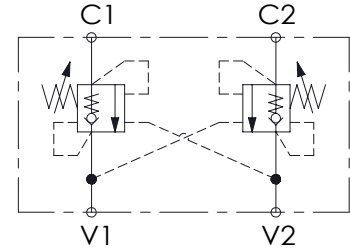
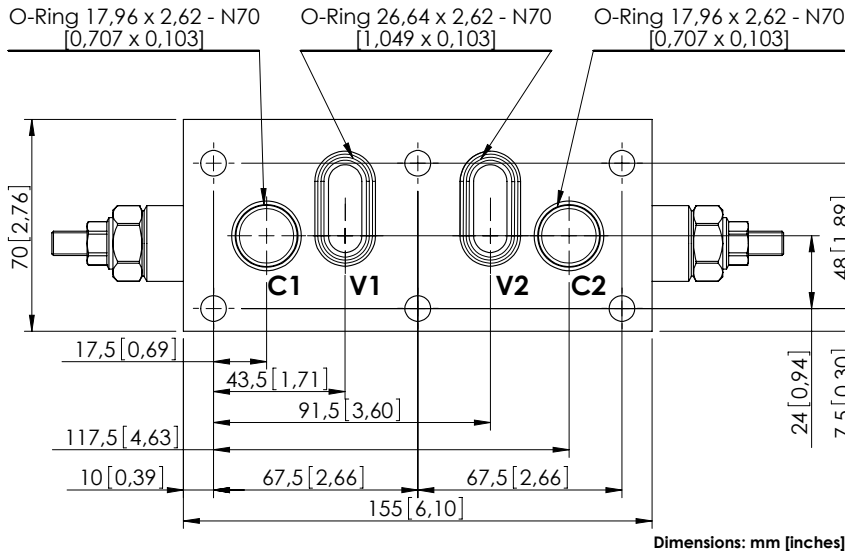
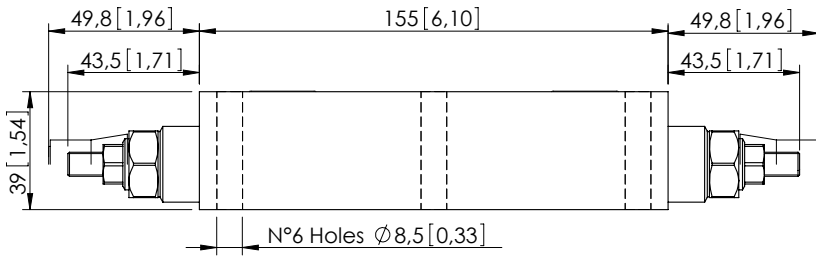


OVERCENTRE VALVE

# MBDN-060-ZDNA

DOUBLE ACTING  
ALL FLANGED PORTS



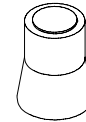
### SPECIFICATIONS

|                                  |  |
|----------------------------------|--|
| Max. operating pressure:         | 350 bar (5000 psi)                                       |
| Rated flow:                      | 60 l/min (16 gpm)  |
| Weight:                          | Aluminium: 1,3 kg (2,87 lbs)<br>Steel: 3,1 kg (6,83 lbs) |
| Contamination class to ISO 4406: | See technical spec.                                      |
| MTFd:                            | 150 - 1200 years: See technical spec.                    |

### NOTES

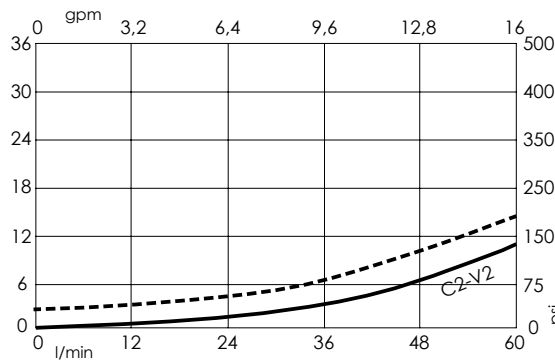
Setting: at least 1.3 times the load induced pressure.  
For other configurations/quick codes not available in this catalogue page please consult factory

### SEALING CAP



Ordering code:  
AT000020

### CURVES



### ORDERING CODES

| Quick code | Description               | Pilot ratio | Manifold material | Main ports size            | Standard setting<br>Q=5 l/min (1,3 gpm) | Adjustment range            | Pressure increase            |
|------------|---------------------------|-------------|-------------------|----------------------------|---|-----------------------------|------------------------------|
| MB000404   | MBDN-060-ZDNA-04-PTF-N350 | 4,2:1       | Aluminium         | V1,V2: Ø 10<br>C1,C2: Ø 10 | 350 bar (5000 psi)                      | 100-350 bar (1400-5000 psi) | 138 bar/turn (2000 psi/turn) |
| MB000405   | MBDN-060-ZDNA-04-PTF-N200 | 4,2:1       | Aluminium         | V1,V2: Ø 10<br>C1,C2: Ø 10 | 200 bar (2900 psi)                      | 60-210 bar (850-3000 psi)   | 62 bar/turn (900 psi/turn)   |
| MB000424   | MBDN-060-ADNA-04-PTF-N350 | 4,2:1       | Steel             | V1,V2: Ø 10<br>C1,C2: Ø 10 | 350 bar (5000 psi)                      | 100-350 bar (1400-5000 psi) | 138 bar/turn (2000 psi/turn) |
| MB000442   | MBDN-060-ADNA-04-PTF-N200 | 4,2:1       | Steel             | V1,V2: Ø 10<br>C1,C2: Ø 10 | 200 bar (2900 psi)                      | 60-210 bar (850-3000 psi)   | 62 bar/turn (900 psi/turn)   |
| MB000399   | MBDN-060-ZDNA-07-PTF-N350 | 7:1         | Aluminium         | V1,V2: Ø 10<br>C1,C2: Ø 10 | 350 bar (5000 psi)                      | 100-350 bar (1400-5000 psi) | 106 bar/turn (1500 psi/turn) |
| MB000403   | MBDN-060-ZDNA-07-PTF-N200 | 7:1         | Aluminium         | V1,V2: Ø 10<br>C1,C2: Ø 10 | 200 bar (2900 psi)                      | 60-210 bar (850-3000 psi)   | 46 bar/turn (650 psi/turn)   |
| MB000441   | MBDN-060-ADNA-07-PTF-N350 | 7:1         | Steel             | V1,V2: Ø 10<br>C1,C2: Ø 10 | 350 bar (5000 psi)                      | 100-350 bar (1400-5000 psi) | 106 bar/turn (1500 psi/turn) |
| MB000440   | MBDN-060-ADNA-07-PTF-N200 | 7:1         | Steel             | V1,V2: Ø 10<br>C1,C2: Ø 10 | 200 bar (2900 psi)                      | 60-210 bar (850-3000 psi)   | 46 bar/turn (650 psi/turn)   |