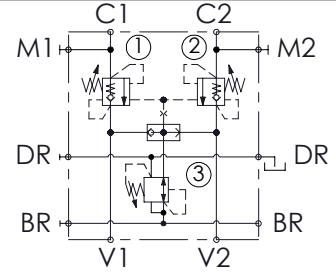
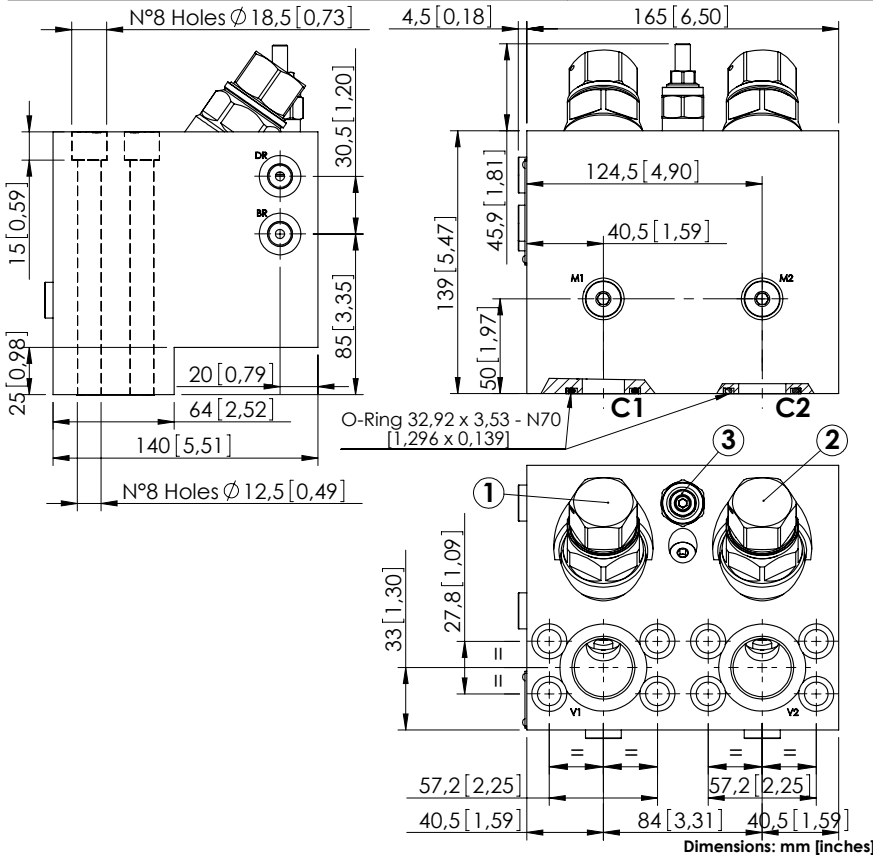


MBDN-300-AMSR

OVERCENTRE
WITH BRAKE RELEASE



SPECIFICATIONS

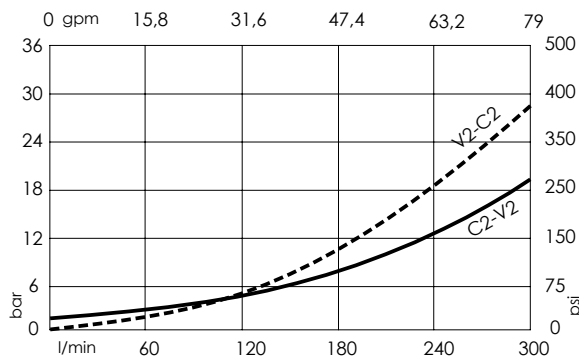
Max. operating pressure:	420 bar (6000 psi)
Rated flow:	300 l/min (79 gpm)
Manifold:	Steel
Weight:	20,43 kg (45,09 lbs)
Contamination class to ISO 4406:	See technical spec.
MTF _a :	150 - 1200 years: See technical spec.

NOTES

Setting: at least 1.3 times the load induced pressure.
Designed for REXROTH A2FE 80-90 motors.

For other configurations/quick codes not available in this catalogue page please consult factory

CURVES



ORDERING CODES

Quick code	Description	Pilot ratio	Main ports size	Standard setting Q=5 l/min (1,3 gpm)	Adjustment range	Pressure increase
MB000402	MBDN-300-AMSR-04-S10-N420	4:1	V1,V2: G 1" C1,C2: 1" SAE 6000 BR,DR,M1,M2: G1/4"	① ② 350 bar (5000 psi) ③ 30 bar (400 psi)	① ② 100-350 bar (1400-5000 psi) ③ 10-60 bar (150-850 psi)	① ② 75 bar/turn (1100 psi/turn) ③ 6 bar/turn (85 psi/turn)
MB000349	MBDN-300-AMSR-06-S10-N420	6:1	V1,V2: G 1" C1,C2: 1" SAE 6000 BR,DR,M1,M2: G1/4"	① ② 350 bar (5000 psi) ③ 30 bar (400 psi)	① ② 100-420 bar (1400-6000 psi) ③ 10-60 bar (150-850 psi)	① ② 62 bar/turn (900 psi/turn) ③ 6 bar/turn (85 psi/turn)