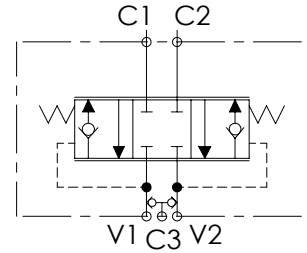
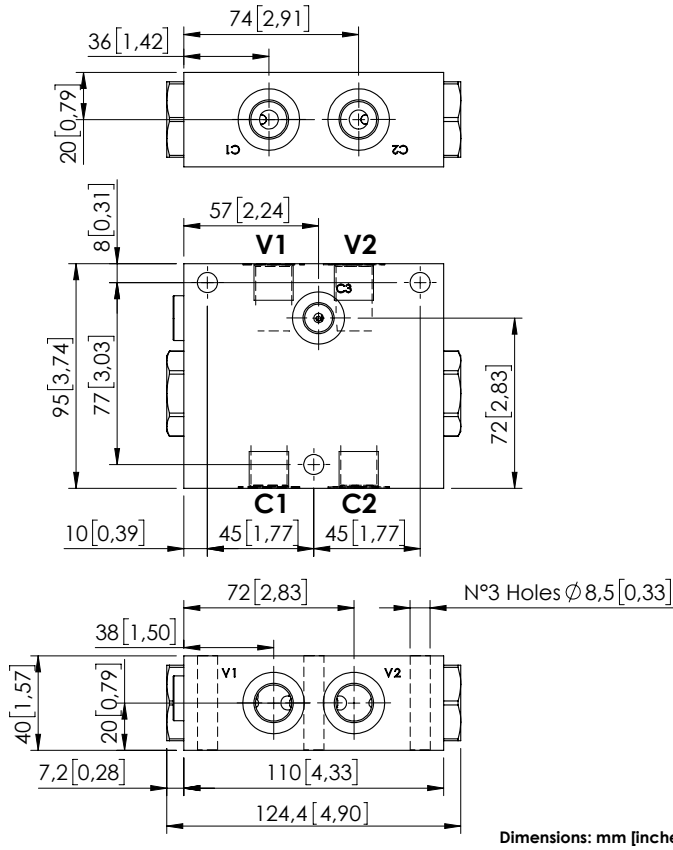


MBDN-055-GLSF

COUNTERBALANCE
WITH BRAKE RELEASE



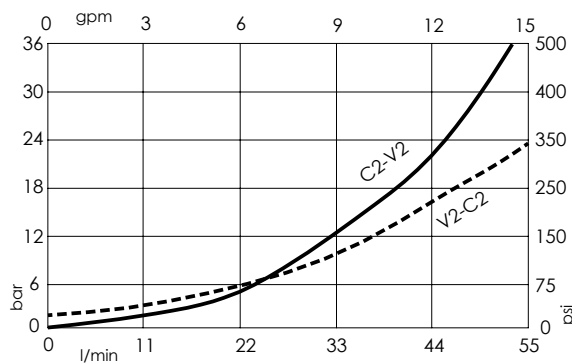
SPECIFICATIONS

Max. operating pressure:	350 bar (5000 psi)
Rated flow:	55 l/min (15 gpm)
Manifold:	Cast iron
Weight:	3,08 kg (6,79 lbs)
Contamination class to ISO 4406:	See technical spec.
MTTFa:	150 - 1200 years: See technical spec.

NOTES

Setting: at least 1.3 times the load induced pressure.
 Designed for traction control of small undercarriages.
 For other configurations/quick codes not available in this catalogue page please consult factory

CURVES



ORDERING CODES

Quick code	Description	Main ports size	Standard setting Q=5 l/min (1,3 gpm)	Adjustment range	Pressure increase
MB000232	MBDN-055-GLSF-01-G38-N006	V1,V2,C1,C2 : G3/8" C3 : G1/4"	6 bar (85 psi)	Fixed setting	NO