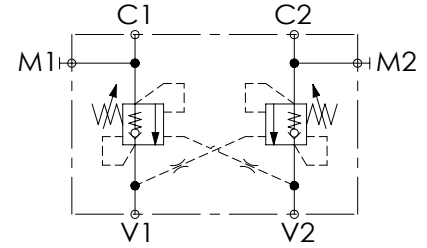
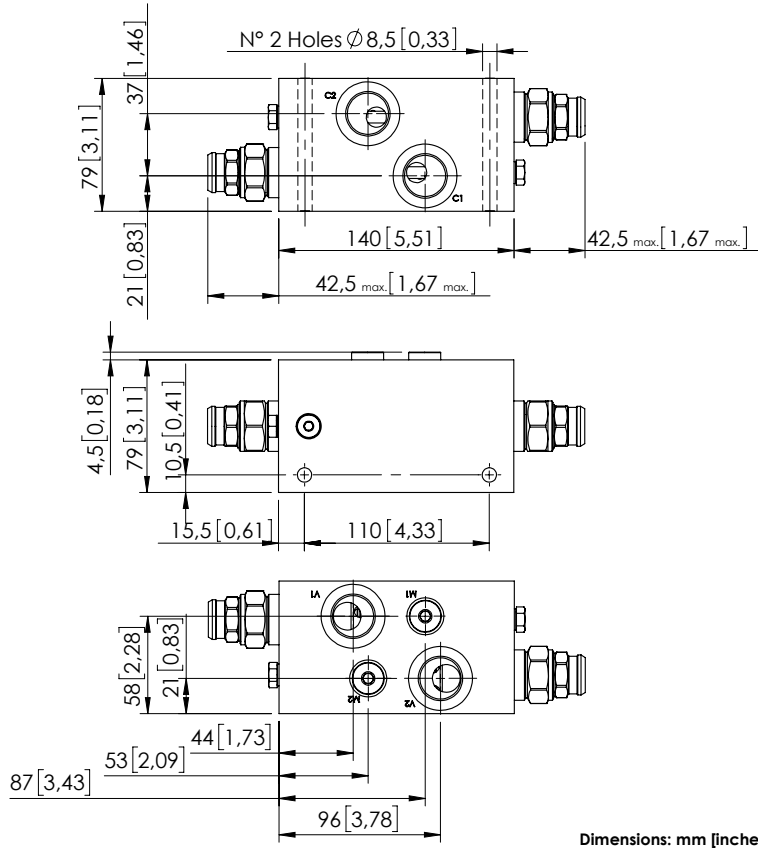


OVERCENTRE VALVE

MBDN-150-ZLNP

DOUBLE ACTING



SPECIFICATIONS

| | |
|----------------------------------|---------------------------------------|
| Max. operating pressure: | 350 bar (5000 psi) |
| Rated flow: | 150 l/min (40 gpm) |
| Manifold: | Aluminium |
| Weight: | 2,69 kg (5,49 lbs) |
| Contamination class to ISO 4406: | See technical spec. |
| MTTFa: | 150 - 1200 years: See technical spec. |

NOTES

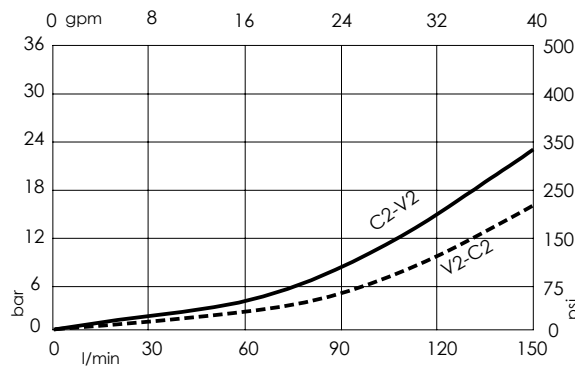
Setting: at least 1.3 times the load induced pressure.
 For other configurations/quick codes not available in this catalogue page please consult factory

SEALING CAP



Ordering code:
ST000012

CURVES



ORDERING CODES

| Quick code | Description | Pilot ratio | Main ports size | Standard setting Q=5 l/min (1,3 gpm) | Adjustment range | Pressure increase |
|------------|---------------------------|-------------|--------------------------------|---|--------------------------------|---------------------------------|
| MB000210 | MBDN-150-ZLNP-04-G34-N350 | 4:1 | V1, V2: G3/4" C1, C2: G3/4" | 350 bar (5000 psi) | 100-350 bar (1400-5000 psi) | 104 bar/turn (1500 psi/turn) |
| | | | | | | |
| | | | | | | |
| | | | | | | |
| | | | | | | |