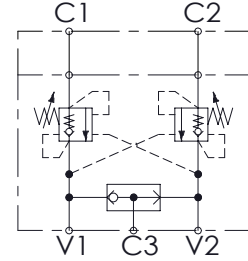
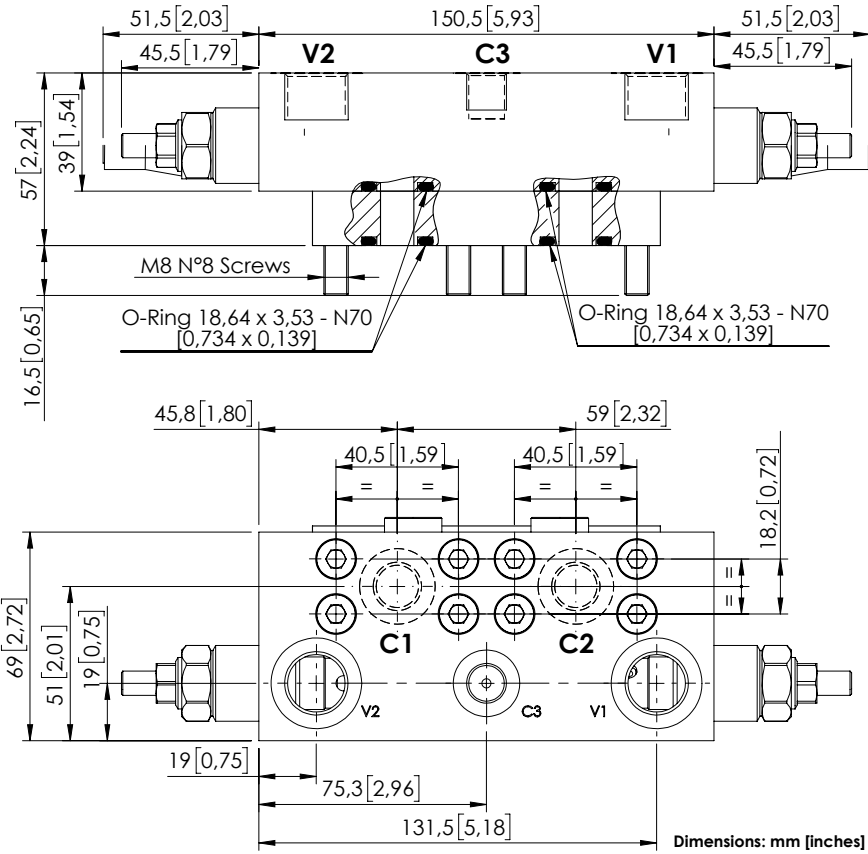


MBDN-060-ZMNR

OVERCENTRE
WITH BRAKE RELEASE



SPECIFICATIONS

Max. operating pressure:	250 bar (3600 psi)
Rated flow:	60 l/min (16 gpm)
Manifold:	Anodized Aluminium
Weight:	1,65 kg (4,41 lbs)
Contamination class to ISO 4406:	See technical spec.
MTF _a :	150 - 1200 years: See technical spec.

NOTES

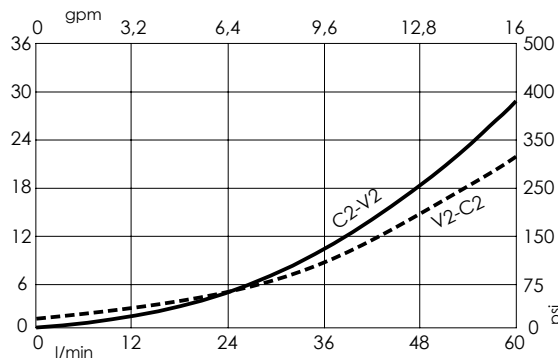
Setting: at least 1.3 times the load induced pressure.
For other configurations/quick codes not available in this catalogue page please consult factory

SEALING CAP



Ordering code:
AT000020

CURVES



ORDERING CODES

Quick code	Description	Pilot ratio	Main ports size	Standard setting Q=5 l/min (1,3 gpm)	Adjustment range	Pressure increase
MB000195	MBDN-060-ZMNR-11-G12-N250	11:1	V1,V2: G 1/2" C3: G 1/4" C1,C2: 1/2" SAE 6000	250 bar (3600 psi)	60-250 bar (850-3600 psi)	69 bar/turn (1000 psi/turn)