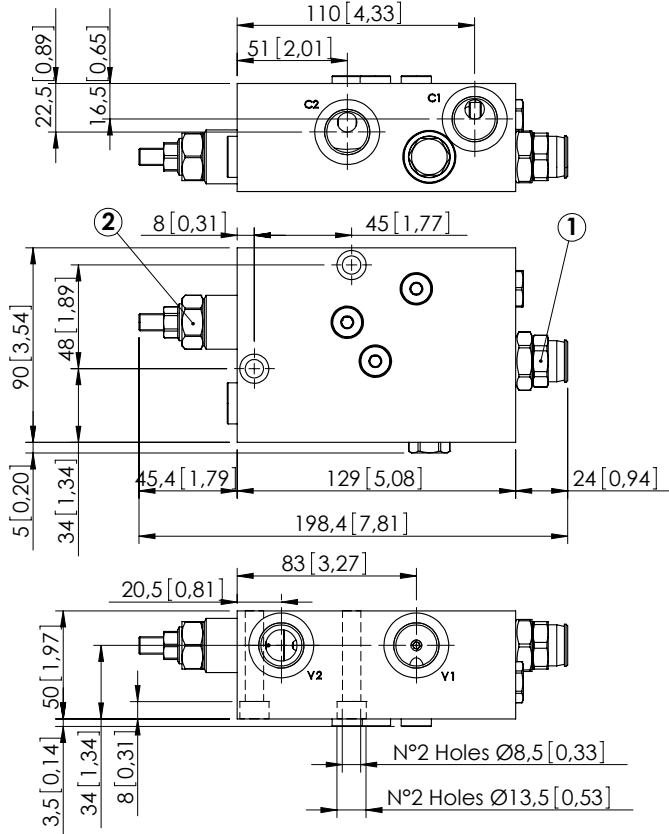


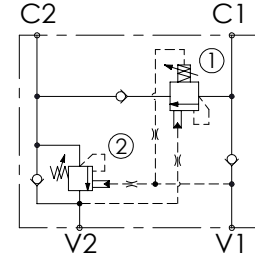
REGENERATIVE VALVE

**MRSN-060-ZLNP**

REGENERATIVE



Dimensions: mm [inches]



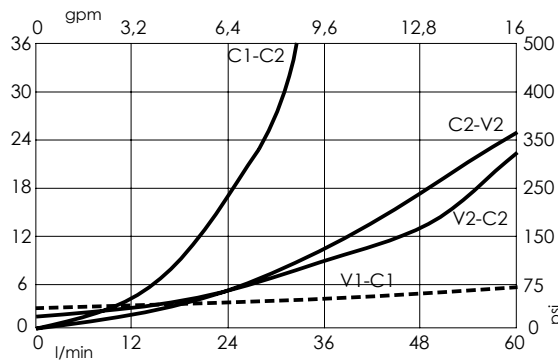
**SPECIFICATIONS**

Max. operating pressure:	<b>350 bar (5000 psi)</b>
Rated flow:	<b>60 l/min (16 gpm)</b>
Manifold:	<b>Aluminium</b>
Weight:	<b>1,71 kg (3.77 lbs)</b>
Contamination class to ISO 4406:	See technical spec.
MTF <sub>a</sub> :	<b>150 - 1200 years: See technical spec.</b>

**NOTES**

Setting: at least 1.3 times the load induced pressure.  
 For other configurations/quick codes not available in this catalogue page please consult factory

**CURVES**



**ORDERING CODES**

Quick code	Description	Pilot ratio	Main ports size	Standard setting (Q=5 l/min)	Adjustment range	Pressure increase
MB000150	MRSN-060-ZLNP-04-G12-N350	4:1	V1,V2,C1,C2 : G 1/2"	① 350 bar (5080 psi) ② 170 bar (2500 psi)	① 100-350 bar (1450-5080 psi) ② 60-210 bar (850-3000 psi)	① 145 bar/turn (2100 psi/turn) ② 62 bar/turn (900 psi/turn)