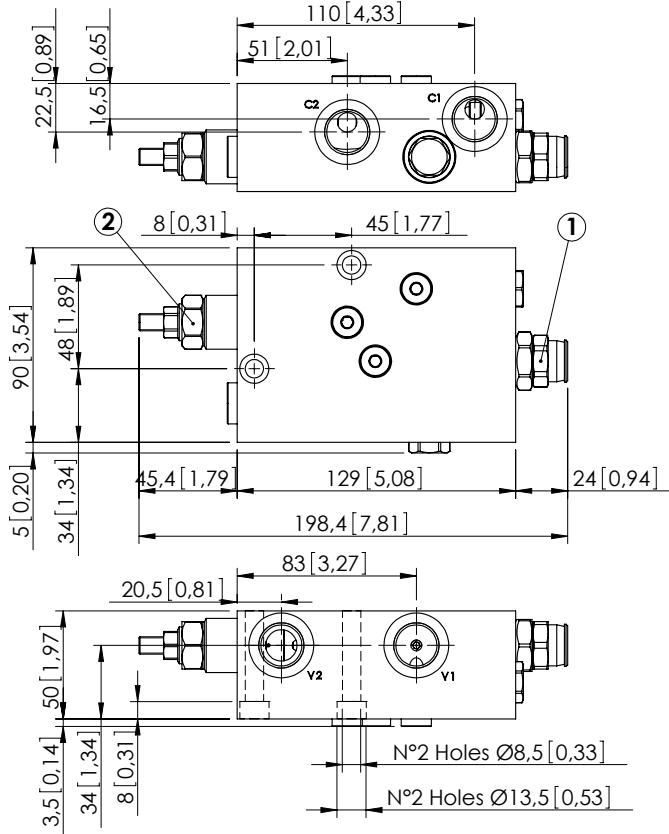


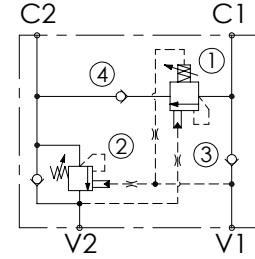
REGENERATIVE VALVE

MRSN-060-ZLNP

REGENERATIVE



Dimensions: mm [inches]



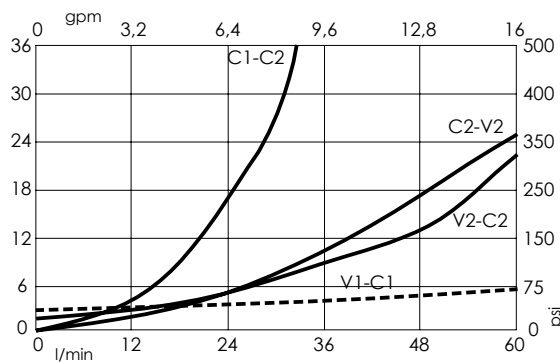
SPECIFICATIONS

Max. operating pressure:	350 bar (5000 psi)
Rated flow:	60 l/min (16 gpm)
Manifold:	Aluminium
Weight:	1,71 kg (3.77 lbs)
Contamination class to ISO 4406:	See technical spec.
MTFa:	150 years

NOTES

Setting: at least 1.3 times the load induced pressure.
 For other configurations/quick codes not available in this catalogue page please consult factory

CURVES



ORDERING CODES

Quick code	Description	Pilot ratio	Main ports size	Standard setting (Q=5 l/min)	Adjustment range	Pressure increase
MB000150	MRSN-060-ZLNP-04-G12-N350	4,2:1	V1,V2,C1,C2 : G 1/2"	170 bar (2500 psi)	60-210 bar (850-3000 psi)	62 bar/turn (900 psi/turn)