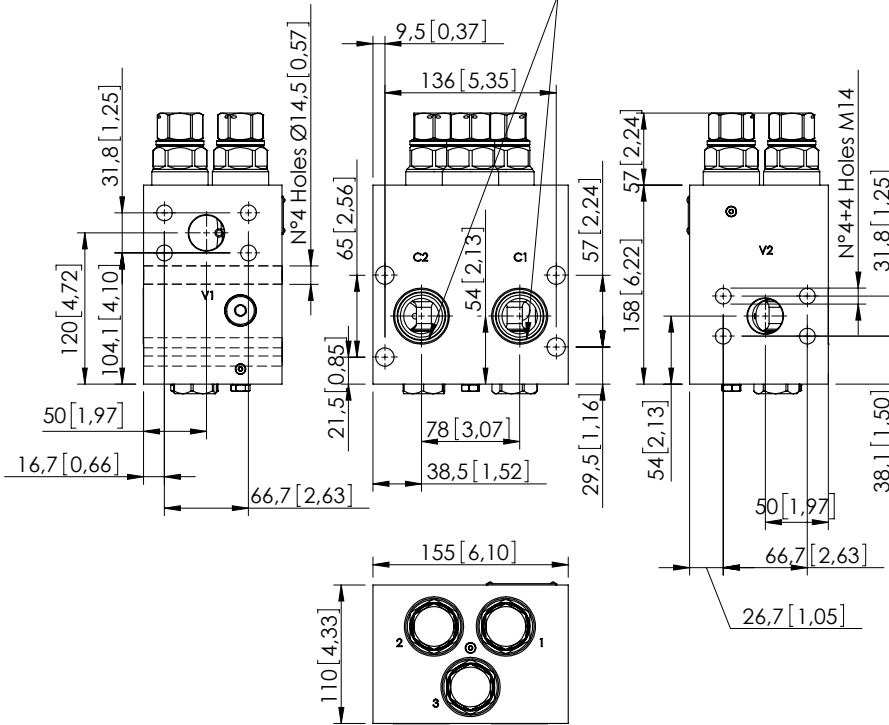
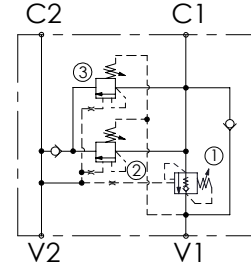


O-Ring 36,09 X 3,53 - V80
[1,421 x 0,139]



Dimensions: mm [inches]



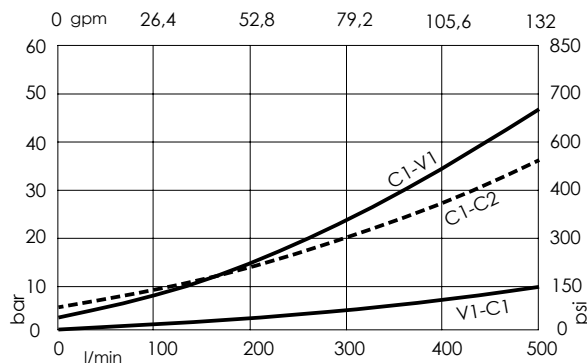
SPECIFICATIONS

| | |
|----------------------------------|---------------------------------------|
| Max. operating pressure: | 420 bar (6000 psi) |
| Rated flow: | 300 l/min (79 gpm) |
| Manifold: | Steel |
| Weight: | 18,89 kg (41,49 lbs) |
| Contamination class to ISO 4406: | See technical spec. |
| MTF _a : | 150 - 1200 years: See technical spec. |

NOTES

Valve for heavy duty working cycles with viton seals and reinforced plugs.
Designed for crusher scissors.
For other configurations/quick codes not available in this catalogue page please consult factory

CURVES



ORDERING CODES

| Quick code | Description | Pilot ratio | Main ports size | Standard setting Q=5 l/min (1,3 gpm) | Adjustment range | Pressure increase |
|------------|---------------------------|-------------|--|---|--------------------------------|---------------------------------|
| MB000132 | MRSN-300-ABNE-06-S11-V420 | 6:1 | V1,V2 : 1-1/4 SAE 6000 C1,C2 : Ø 28 | 250 bar (3600 psi) | 120-360 bar (1700-5200 psi) | 104 bar/turn (1500 psi/turn) |
| | | | | | | |
| | | | | | | |
| | | | | | | |
| | | | | | | |