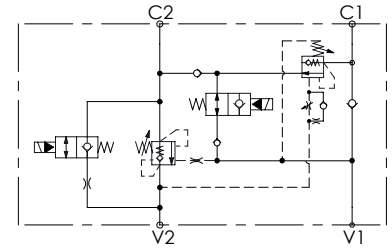
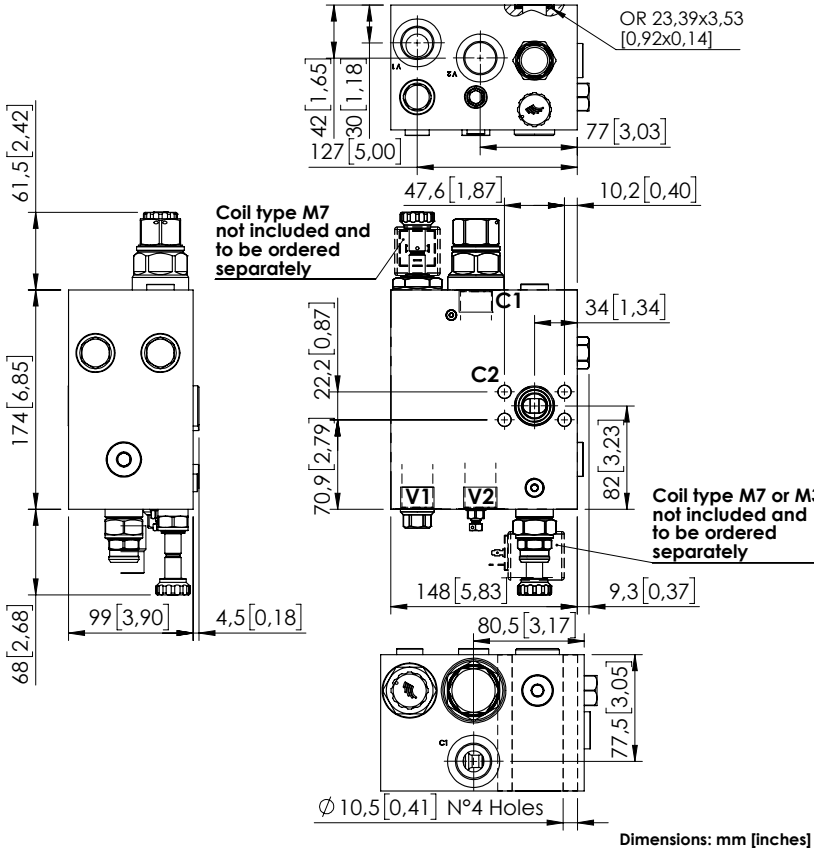


# MRLN-150-ZABE

REGENERATIVE  
WITH ELECTRIC BY-PASS



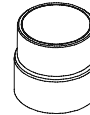
## SPECIFICATIONS

Max. operating pressure:	350 bar (5000 psi)
Rated flow:	150 l/min (40 gpm)
Manifold:	Aluminium
Coil type:	M7 or M3 type
Weight:	7.59 kg (16,7 lbs)
Contamination class to ISO 4406:	See technical spec.
MTF <sub>a</sub> :	150 - 1200 years: See technical spec.

## NOTES

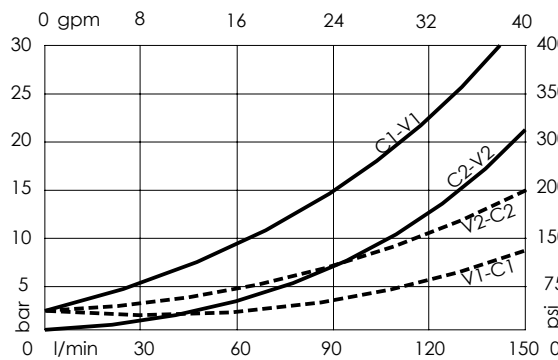
Setting: at least 1.3 times the load induced pressure.  
For other configurations/quick codes not available in this catalogue page please consult factory

## SEALING CAP



Ordering code:  
ST000012

## CURVES



## ORDERING CODES

Quick code	Description	Pilot ratio	Ports	Standard setting Q=5 l/min (1,3 gpm)	Adjustment range	Pressure increase
MB000119	MRLN-150-ZABE-04-G34-N350	4:1	V1,V2,C1: G 3/4" C2: Ø22	350 bar (5000 psi)	100-350 bar (1500-5000 psi)	104 bar/turn (1500 psi/turn)