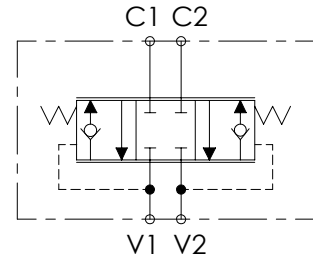
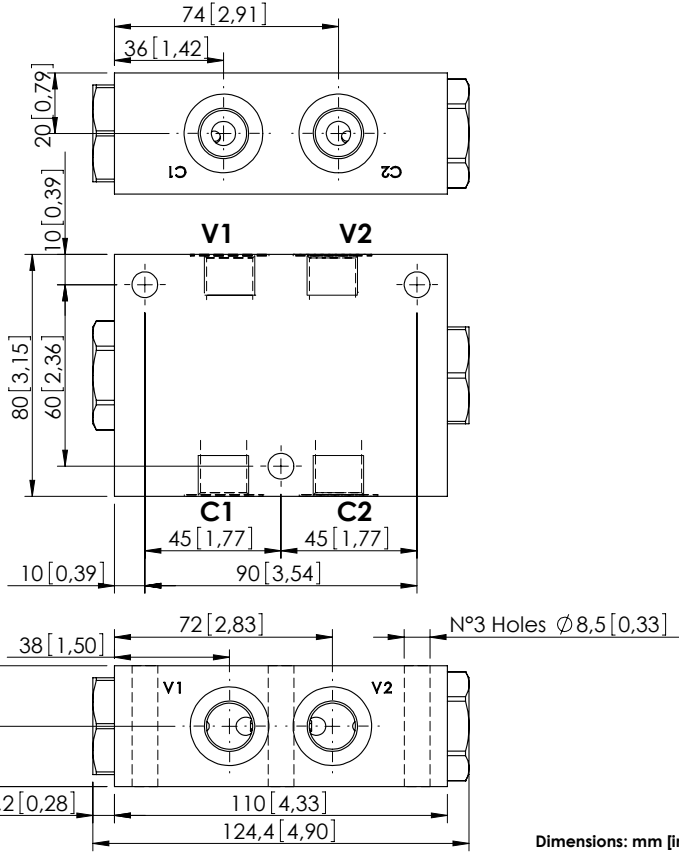


MBDN-055-GLNR

COUNTERBALANCE



SPECIFICATIONS

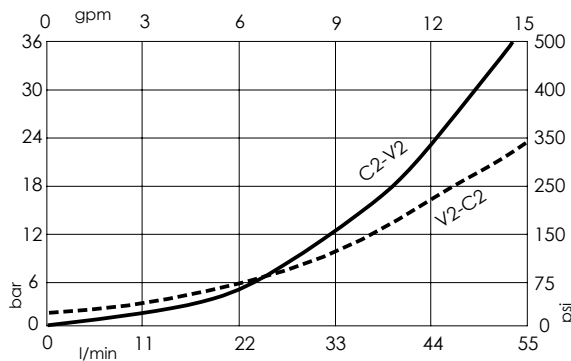
Max. operating pressure:	350 bar (5000 psi)
Rated flow:	55 l/min (15 gpm)
Manifold:	Cast iron
Weight:	2,53 kg (5,58 lbs)
Contamination class to ISO 4406:	See technical spec.
MTTFa:	150 - 1200 years: See technical spec.

NOTES

Designed for traction control of small undercarriages.

For other configurations/quick codes not available in this catalogue page please consult factory

CURVES



ORDERING CODES

Quick code	Description	Main ports size	Standard setting Q=5 l/min (1,3 gpm)	Adjustment range	Pressure increase
MB000112	MBDN-055-GLNR-01-G38-N006	V1,V2,C1,C2 : G3/8"	6 bar (85 psi)	Fixed setting	NO