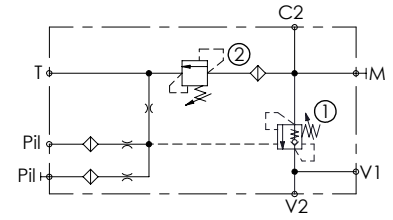
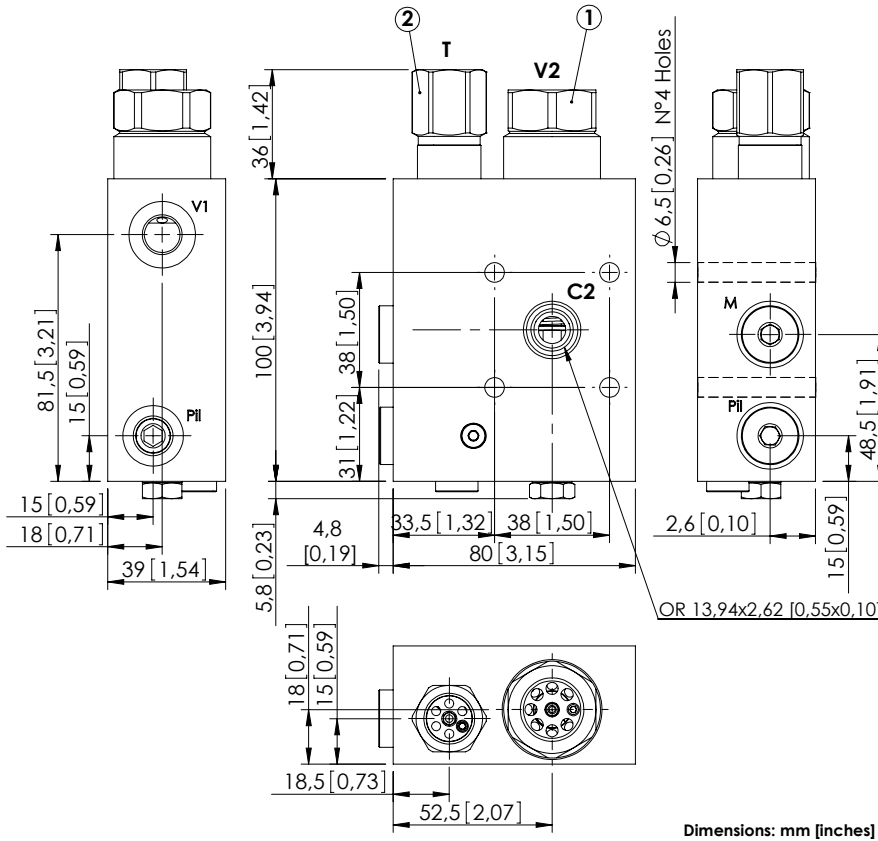


MBSN-060-AAST



SPECIFICATIONS

Max. operating pressure:	500 bar (7200 psi)
Rated flow:	60 l/min (16 gpm)
Manifold:	Steel
Weight:	2,42 kg (5,3 lbs)
Contamination class to ISO 4406:	See technical spec.
MTF _a :	150 - 1200 years: See technical spec.

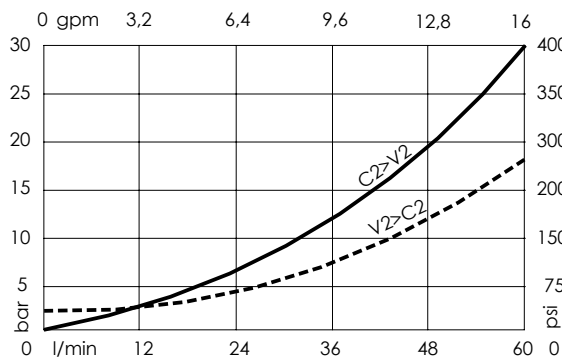
NOTES

Setting: at least 1.3 times the load induced pressure.

Operative pilot ratio: 3,6:1

For other configurations/quick codes not available in this catalogue page please consult factory

CURVES



ORDERING CODES

Quick code	Description	Pilot ratio	Ports	Standard setting Q=5 l/min (1,3 gpm)	Adjustment range	Pressure increase bar/turn (psi/turn)
MB000101	MBSN-060-AAST-07-G12-N500	7:1	V1, P1, M: G 1/4" C2: Ø9 T: G3/8" V2: G1/2"	① 450 bar (6500 psi) ② 450 bar (6500 psi)	① 200-450 bar (2900-6500 psi) ② 250-450 bar (3600-6500 psi)	① 366 (5300) ② 167 (2400)