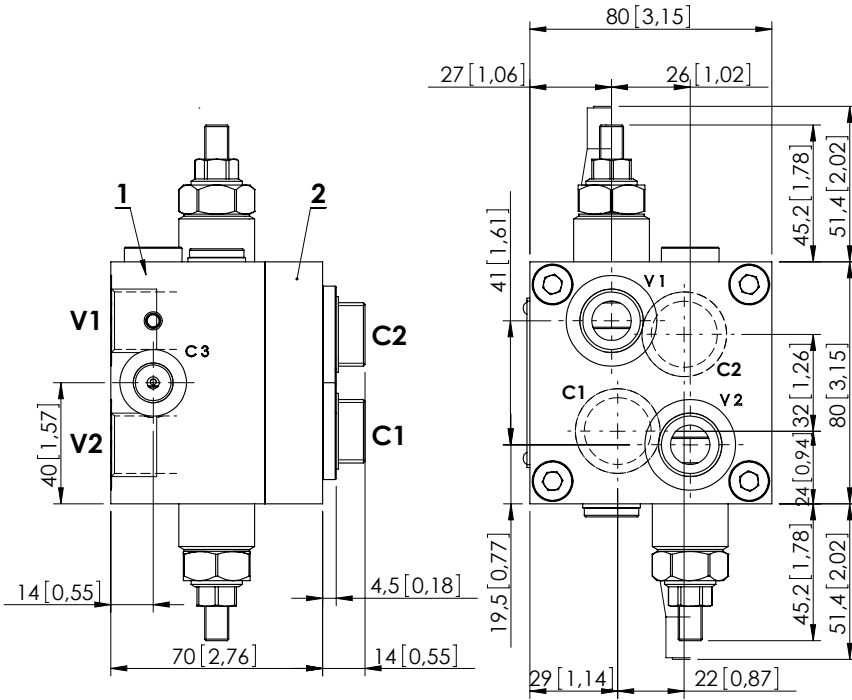
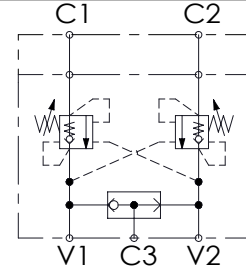


# MBDN-060-LMSF

OVERCENTRE  
WITH BRAKE RELEASE



Dimensions: mm [inches]



## SPECIFICATIONS

Max. operating pressure:	250 bar (3600 psi)
Rated flow:	60 l/min (16 gpm)
Manifold:	Anodized Aluminium
Weight:	1,59 kg (3,51 lbs)
Contamination class to ISO 4406:	See technical spec.
MTF <sub>d</sub> :	150 - 1200 years: See technical spec.

## NOTES

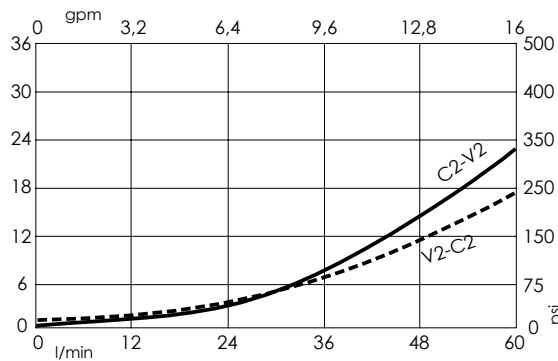
Setting: at least 1.3 times the load induced pressure.  
 Designed for OMS motors.  
 Valve composed by:  
 1.MB000520  
 2.MP000012  
 For other configurations/quick codes not available in this catalogue page please consult factory

## SEALING CAP



Ordering code:  
AT000020

## CURVES



## ORDERING CODES

Quick code	Description	Pilot ratio	Main ports size	Standard setting Q=5 l/min (1,3 gpm)	Adjustment range	Pressure increase
MB000036	MBDN-060-LMSF-04-G12-N200-NOMS	4,2:1	V1, V2: G 1/2" C1, C2: OMS flange C3: G 1/4"	200 bar (2900 psi)	60-210 bar (850-3000 psi)	62 bar/turn (900 psi/turn)