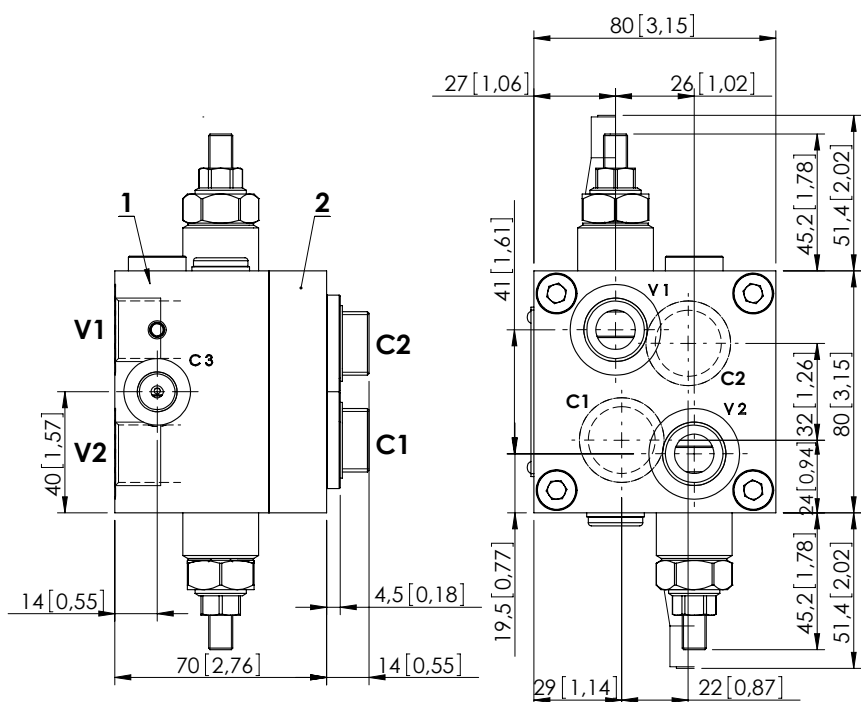
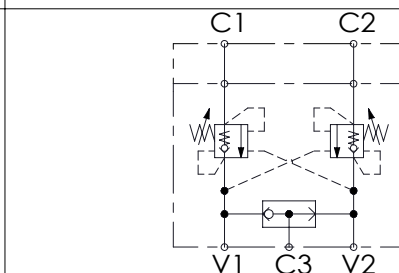


MBDN-060-LMSFOVERCENTRE
WITH BRAKE RELEASE

Dimensions: mm [inches]

**SPECIFICATIONS**

| | |
|----------------------------------|---------------------|
| Max. operating pressure: | 250 bar (3600 psi) |
| Rated flow: | 60 l/min (16 gpm) |
| Manifold: | Anodized Aluminium |
| Weight: | 1,59 kg (3,51 lbs) |
| Contamination class to ISO 4406: | See technical spec. |
| MTFa: | 150 years |

NOTES

Setting: at least 1.3 times the load induced pressure.

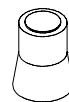
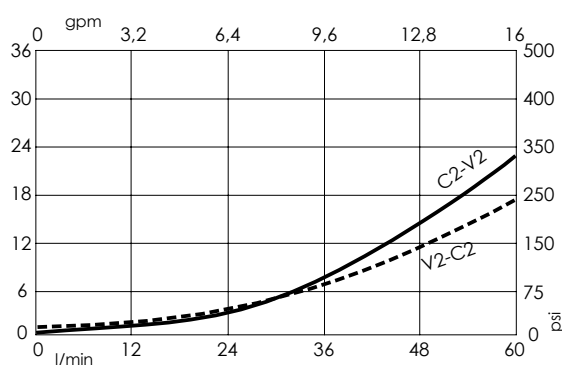
Designed for OMS motors.

Valve composed by:

1.MB000520

2.MP000012

For other configurations/quick codes not available in this catalogue page please consult factory

SEALING CAPOrdering code:
AT000020**CURVES****ORDERING CODES**

| Quick code | Description | Pilot ratio | Main ports size | Standard setting Q=5 l/min (1,3 gpm) | Adjustment range | Pressure increase |
|------------|--------------------------------|-------------|--|---|------------------------------|-------------------------------|
| MB000036 | MBDN-060-LMSF-04-G12-N200-NOMS | 4,2:1 | V1,V2: G 1/2" C1,C2: OMS flange C3: G 1/4" | 200 bar (2900 psi) | 60-210 bar (850-3000 psi) | 62 bar/turn (900 psi/turn) |
| | | | | | | |
| | | | | | | |
| | | | | | | |
| | | | | | | |
| | | | | | | |