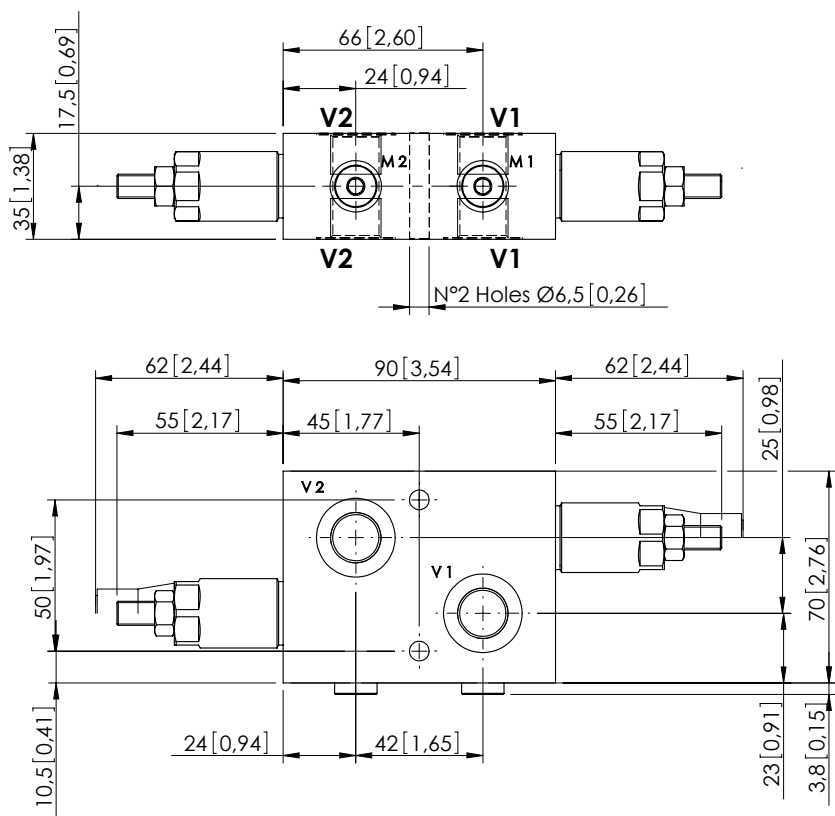
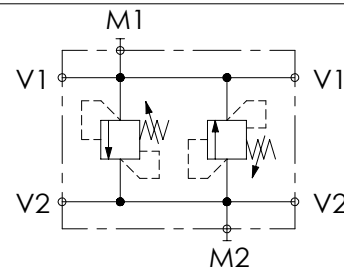


MADN-030-TLNR

DOUBLE ANTISHOCK



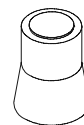
Dimensions: mm [inches]

**SPECIFICATIONS**

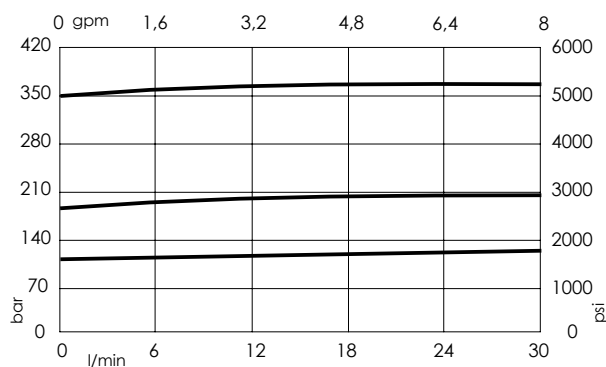
Max. operating pressure:	350 bar (5000 psi)
Rated flow:	30 l/min (8 gpm)
Manifold:	Aluminium
Weight:	0,81 kg (1,79 lbs)
Contamination class to ISO 4406:	See technical spec.
MTFa:	150 years

NOTES

For other configurations/quick codes not available in this catalogue page please consult factory

SEALING CAP

Ordering code:
AT000020

CURVES**ORDERING CODES**

Quick code	Description	Main ports size	Standard setting Q=5 l/min (1,3 gpm)	Adjustment range	Pressure increase
MA000006	MADN-030-TLNR-HN-G38-N350	V1,V2 : G 3/8" M1,M2 : G1/8"	350 bar (5000 psi)	100-350 bar (1400-5000 psi)	91 bar/turn (1300 psi/turn)
MA000005	MADN-030-TLNR-HN-G38-N200	V1,V2 : G 3/8" M1,M2 : G1/8"	200 bar (2900 psi)	50-210 bar (700-3000 psi)	42 bar/turn (600 psi/turn)
MA000004	MADN-030-TLNR-HN-G38-N100	V1,V2 : G 3/8" M1,M2 : G1/8"	100 bar (1400 psi)	30-100 bar (450-1400 psi)	20 bar/turn (300 psi/turn)