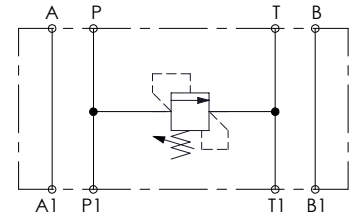
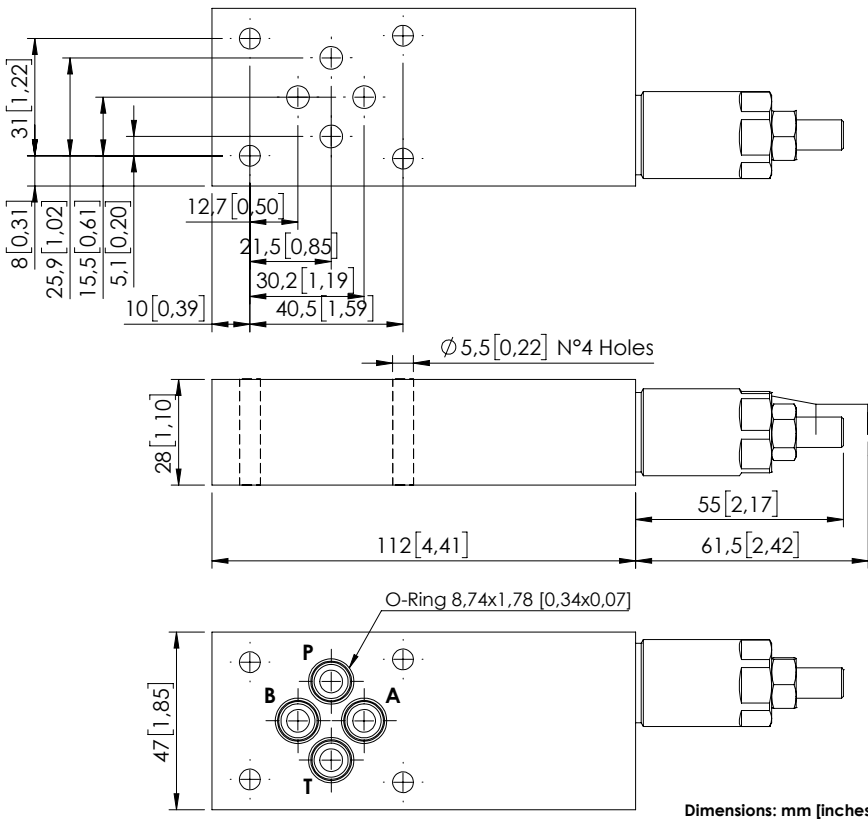


# KPLN-030-DPNA

CETOP 3



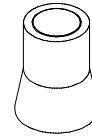
## SPECIFICATIONS

|                                  |                                       |
|----------------------------------|---------------------------------------|
| Max. operating pressure:         | 210 bar (3000 psi)                    |
| Rated flow:                      | 30 l/min (8 gpm)                      |
| Manifold:                        | Aluminium                             |
| Weight:                          | 0,51 kg (1,14 lbs)                    |
| Contamination class to ISO 4406: | See technical spec.                   |
| MTTFa:                           | 150 - 1200 years: See technical spec. |

## NOTES

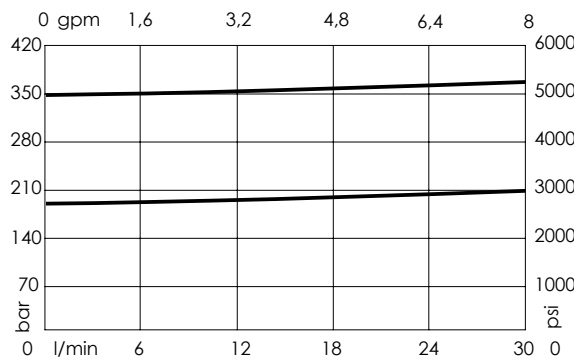
For other configurations/quick codes not available in this catalogue page please consult factory

## SEALING CAP



Ordering code:  
AT000020

## CURVES



## ORDERING CODES

| Quick code | Description               | Ports            | Standard setting<br>Q=5 l/min (1,3 gpm) | Adjustment range            | Pressure increase           |
|------------|---------------------------|------------------|-----------------------------------------|-----------------------------|-----------------------------|
| KP000170   | KPLN-030-DPNA-HN-N06-N210 | A,B,P,T: CETOP 3 | 350 bar (5000 psi)                      | 100-350 bar (1400-5000 psi) | 91 bar/turn (1300 psi/turn) |
| KP000112   | KPLN-030-DPNA-HN-N06-N200 | A,B,P,T: CETOP 3 | 200 bar (2800 psi)                      | 50-210 bar (700-3000 psi)   | 42 bar/turn (600 psi/turn)  |
|            |                           |                  |                                         |                             |                             |
|            |                           |                  |                                         |                             |                             |
|            |                           |                  |                                         |                             |                             |