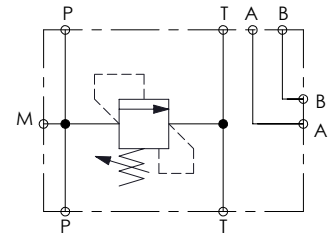
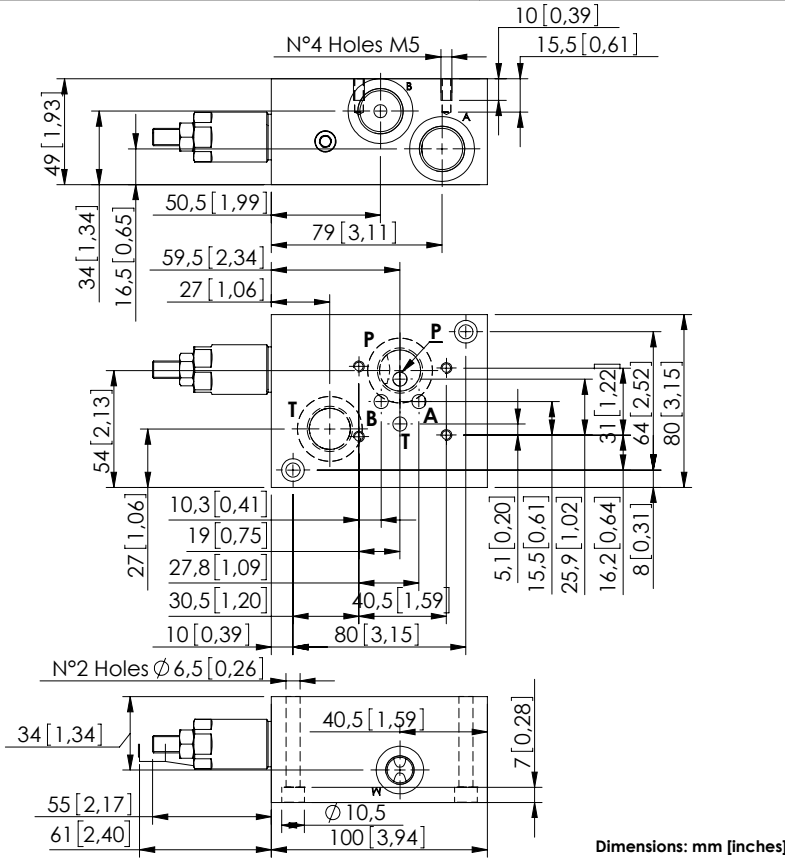


# KPLN-030-DPNA

CETOP 3  
SUBPLATE



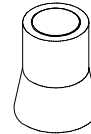
## SPECIFICATIONS

Max. operating pressure:	350 bar (5000 psi)
Rated flow:	30 l/min (8 gpm)
Manifold:	Aluminium
Weight:	1,04 kg (2.2 lbs)
Contamination class to ISO 4406:	See technical spec.
MTTFa:	150 - 1200 years: See technical spec.

## NOTES

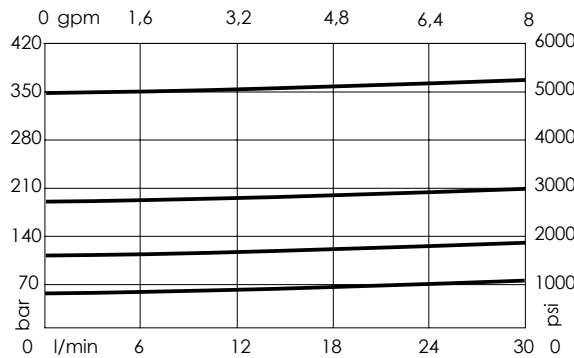
For other configurations/quick codes not available in this catalogue page please consult factory

## SEALING CAP



Ordering code:  
AT000020

## CURVES



## ORDERING CODES

Quick code	Description	Ports	Standard setting Q=5 l/min (1.3 gpm)	Adjustment range	Pressure increase
KP000071	KPLN-030-DPNA-HN-N06-N350	A,B,P,T: CETOP 3 A,B,P,T: G 1/2", M: G 1/4"	350 bar (5000 psi)	100-350 bar (1400-5000 psi)	91 bar/turn (1300 psi/turn)
KP000072	KPLN-030-DPNA-HN-N06-N200	A,B,P,T: CETOP 3 A,B,P,T: G 1/2", M: G 1/4"	200 bar (2800 psi)	50-210 bar (700-3000 psi)	42 bar/turn (600 psi/turn)
KP000073	KPLN-030-DPNA-HN-N06-N100	A,B,P,T: CETOP 3 A,B,P,T: G 1/2", M: G 1/4"	100 bar (1400 psi)	30-100 bar (450-1400 psi)	20 bar/turn (300 psi/turn)
KP000074	KPLN-030-DPNA-HN-N06-N050	A,B,P,T: CETOP 3 A,B,P,T: G 1/2", M: G 1/4"	50 bar (700 psi)	10-50 bar (150-700 psi)	10 bar/turn (150 psi/turn)