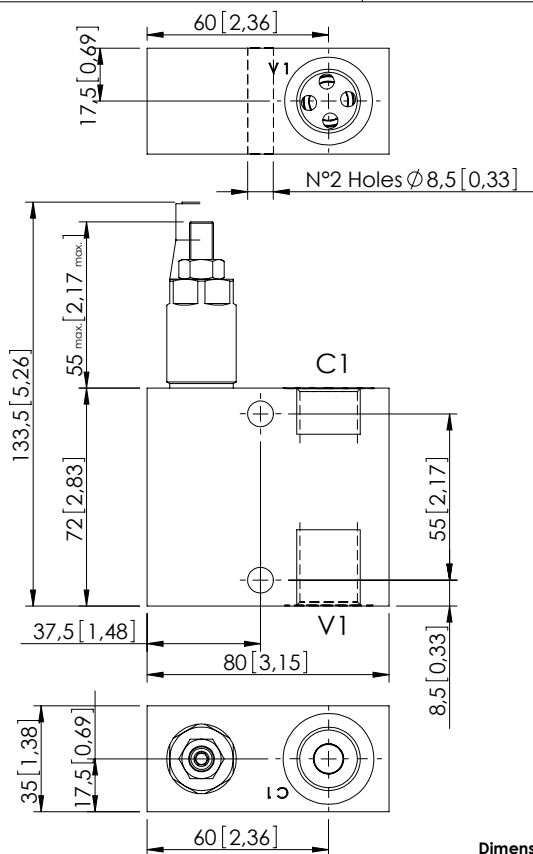


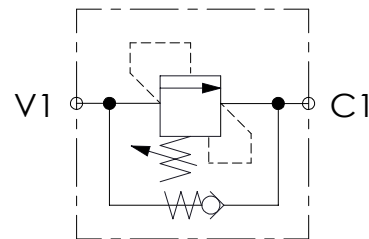
SEQUENCE VALVE IN BODY

KPSN-030-DPNA

DIRECT ACTING
STABILIZED PISTON
NOT COMPENSATED



Dimensions: mm [inches]



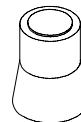
SPECIFICATIONS

| | |
|----------------------------------|---------------------|
| Max. operating pressure: | 350 bar (5000 psi) |
| Rated flow: | 30 l/min (450 gpm) |
| Manifold: | Aluminium |
| Weight: | 0,64 kg (1,41lbs) |
| Contamination class to ISO 4406: | See technical spec. |
| MTTFa: | 150 years |

NOTES

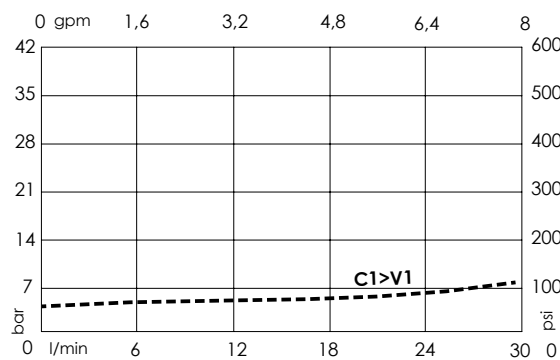
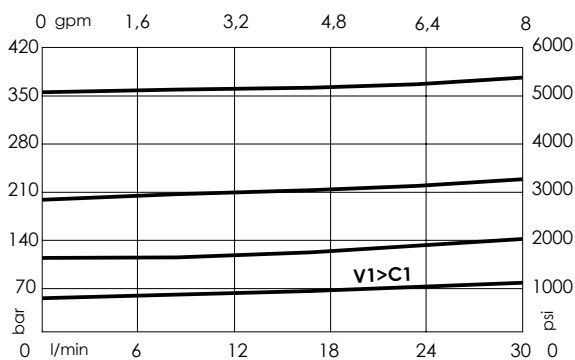
For other configurations/quick codes not available in this catalogue page please consult factory

SEALING CAP



Ordering code:
AT000020

CURVES



ORDERING CODES

| Quick code | Description | Main ports size | Standard setting Q=5 l/min (1,3 gpm) | Adjustment range | Pressure increase |
|------------|---------------------------|-----------------|---|-----------------------------|-----------------------------|
| KP000061 | KPSN-030-DPNA-HN-G12-N350 | C1, V1: G 1/2" | 350 bar (5000 psi) | 100-350 bar (1400-5000 psi) | 91 bar/turn (1300 psi/turn) |
| KP000062 | KPSN-030-DPNA-HN-G12-N200 | C1, V1: G 1/2" | 200 bar (2900 psi) | 50-210 bar (700-3000 psi) | 42 bar/turn (600 psi/turn) |
| KP000060 | KPSN-030-DPNA-HN-G12-N100 | C1, V1: G 1/2" | 100 bar (1400 psi) | 30-100 bar (450-1400 psi) | 20 bar/turn (300 psi/turn) |
| KP000063 | KPSN-030-DPNA-HN-G12-N050 | C1, V1: G 1/2" | 50 bar (700 psi) | 10-50 bar (150-700 psi) | 10 bar/turn (150 psi/turn) |
| | | | | | |
| | | | | | |