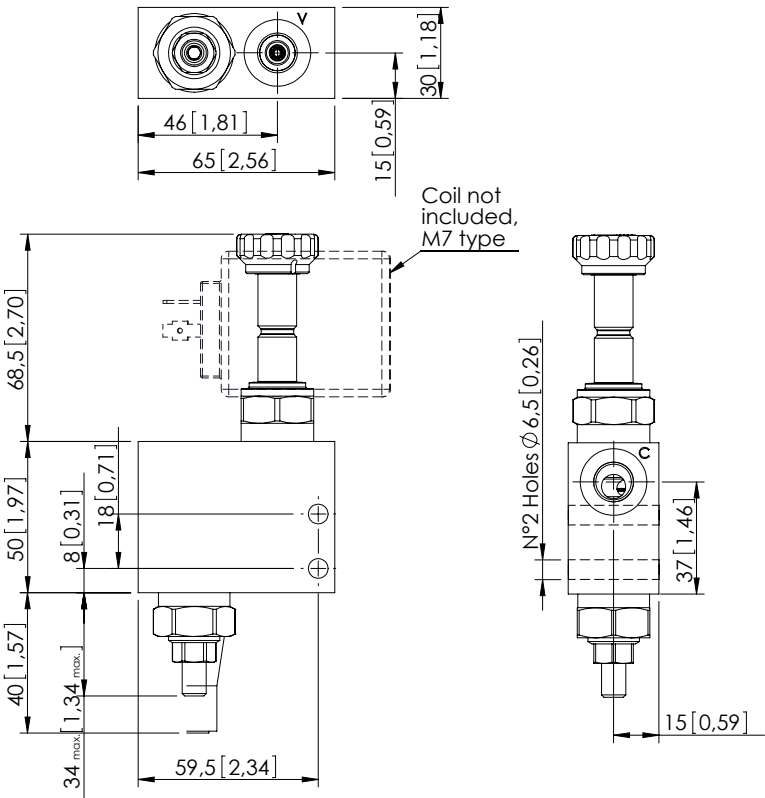
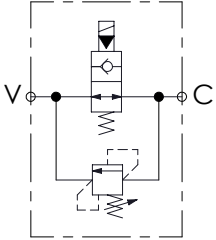


KPEN-020-DPLD

DIRECT ACTING
SOLENOID BY-PASS



Dimensions: mm [inches]

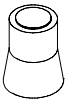


SPECIFICATIONS

| | |
|----------------------------------|---------------------|
| Max. operating pressure: | 350 bar (5000 psi) |
| Rated flow: | 20 l/min (6 gpm) |
| Manifold: | Steel |
| Weight: | 0,83 kg (1,83 lbs) |
| Contamination class to ISO 4406: | See technical spec. |
| MTTFd: | 150 years |

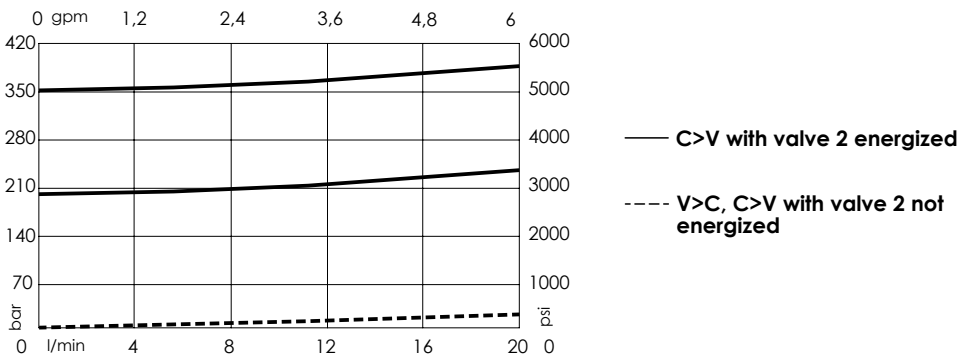
NOTES

SEALING CAP



Ordering code:
AT000020

CURVES



ORDERING CODES

| Quick code | Description | Main ports size | Standard setting (Q=5 l/min) | Adjustment range | Pressure increase |
|------------|---------------------------|-----------------|------------------------------|-----------------------------|------------------------------|
| KP000109 | KPEN-020-DPLD-SN-G14-N350 | G 1/4" | 350 bar (5000 psi) | 175-350 bar (2500-5000 psi) | 177 bar/turn (2500 psi/turn) |
| KP000110 | KPEN-020-DPLD-SN-G14-N210 | G 1/4" | 200 bar (2800 psi) | 105-210 bar (1500-3000 psi) | 80 bar/turn (1100 psi/turn) |
| | | | | | |
| | | | | | |
| | | | | | |
| | | | | | |