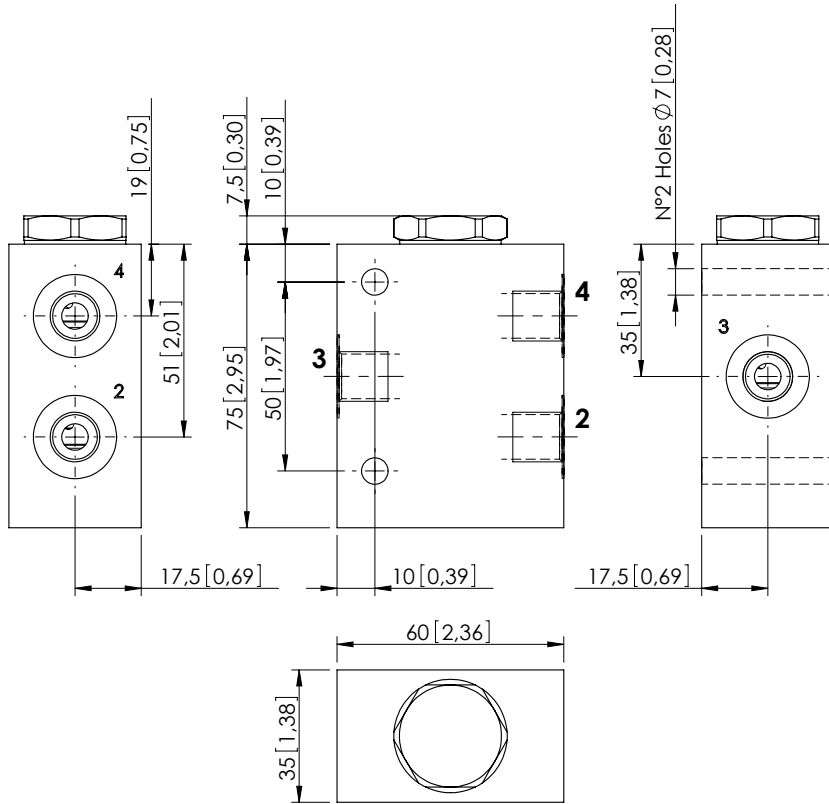
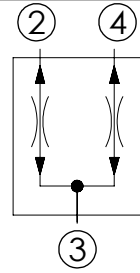


# KFDT-055-BFAR



Dimensions: mm [inches]



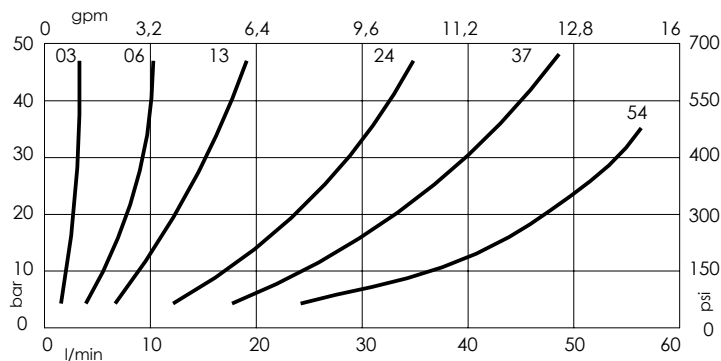
## SPECIFICATIONS

Max. operating pressure:	210 bar (3000 psi)
Division or combination:	50 %- 50 %
Manifold:	Aluminium
Weight:	0,47 kg (1,01 lbs)
Cavity:	SAE-10-4N
Contamination class to ISO 4406:	See technical spec.
MTF <sub>a</sub> :	150 - 1200 years: See technical spec.

## NOTES

Flow divider accuracy:  $\pm 7/8\%$  between 40-100% of max. input flow.  
 For other configurations/quick codes not available in this catalogue page please consult factory

## CURVES



## ORDERING CODES

Quick code	Description	Main ports size	Inlet range flow
KF000005	KFDT-055-BFAR-03-G14-N210-L	2,3,4 : G 1/4"	1,2-3 l/min (0,3-0,8 gpm)
KF000006	KFDT-055-BFAR-06-G14-N210-L	2,3,4 : G 1/4"	3-6 l/min (0,8-2 gpm)
KF000007	KFDT-055-BFAR-13-G14-N210-L	2,3,4 : G 1/4"	6-13 l/min (2-3,4 gpm)
KF000010	KFDT-055-BFAR-13-G38-N210-L	2,3,4 : G 3/8"	6-13 l/min (2-3,4 gpm)
KF000011	KFDT-055-BFAR-24-G38-N210-L	2,3,4 : G 3/8"	10-24 l/min (3-6 gpm)
KF000012	KFDT-055-BFAR-37-G38-N210-L	2,3,4 : G 3/8"	15-37 l/min (4-10 gpm)
KF000009	KFDT-055-BFAR-37-G12-N210-L	2,3,4 : G 1/2"	15-37 l/min (4-10 gpm)
KF000008	KFDT-055-BFAR-44-G12-N210-L	2,3,4 : G 1/2"	18-44 l/min (5-12 gpm)
KF000004	KFDT-055-BFAR-54-G12-N210-L	2,3,4 : G 1/2"	22-54 l/min (6-14 gpm)