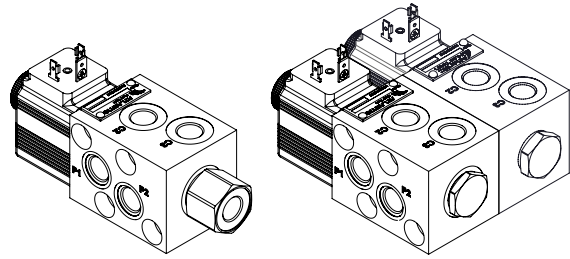
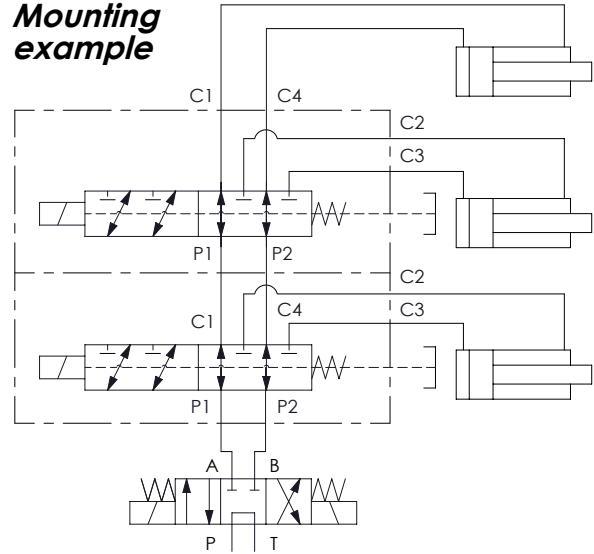


**	Circuit	Transit position
01		
02		
03		

*Only external drain



Mounting example



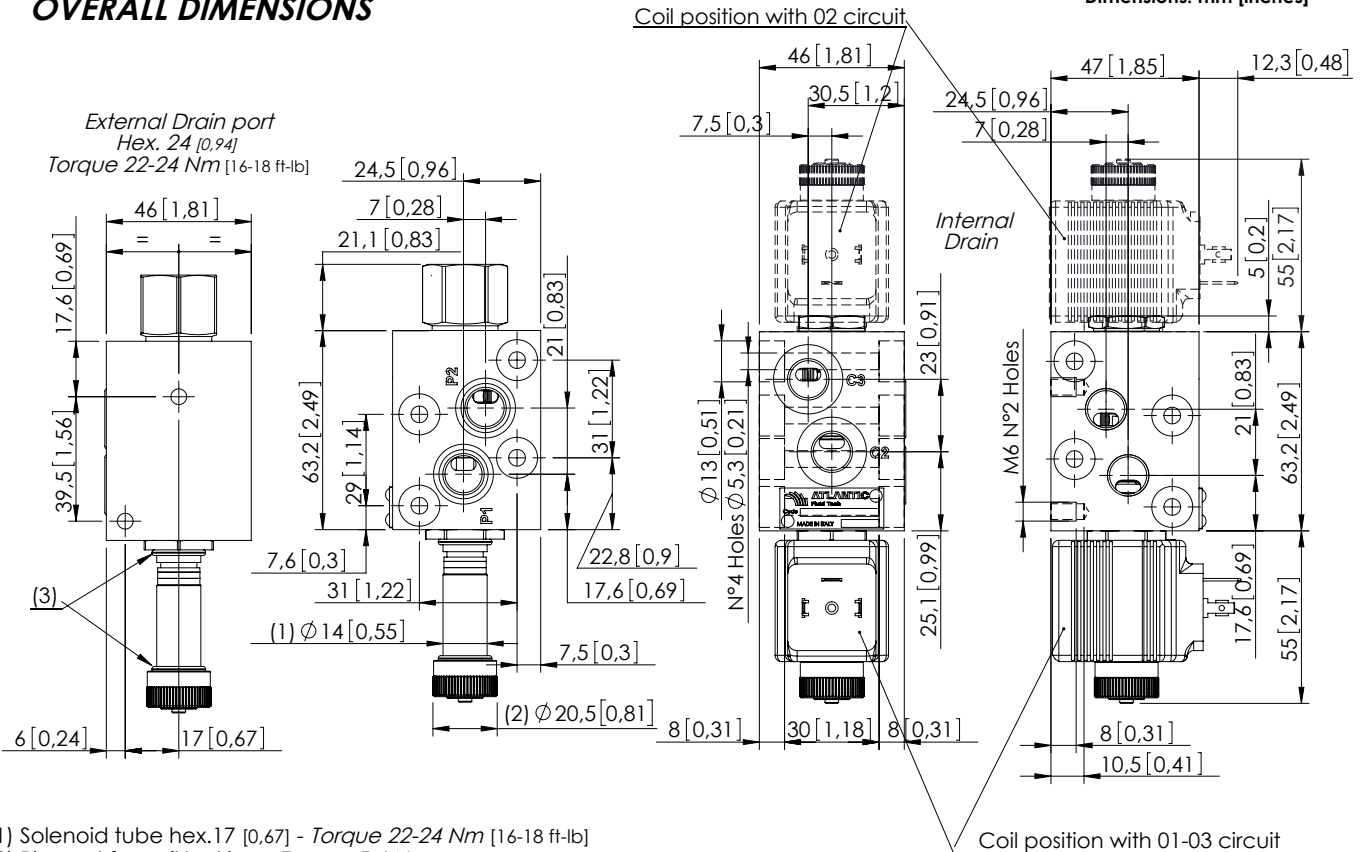
Technical data

Rated flow	l/min (gpm)	25 (7)
Operating pressure	with internal drain "N"	250 (3600) bar (psi)
	with external drain "E"	310 (4500) bar (psi)
Valve weight	Kg (lb)	1 (2)

OVERALL DIMENSIONS

Dimensions: mm [inches]

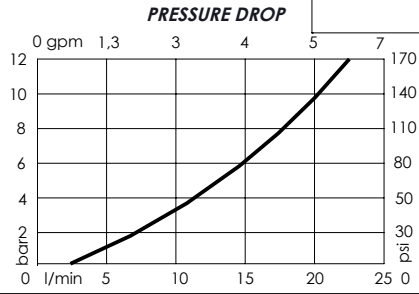
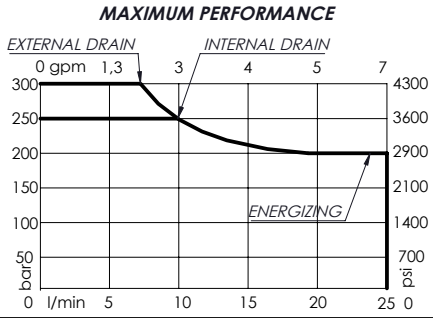
External Drain port
Hex. 24 [0,94]
Torque 22-24 Nm [16-18 ft-lb]



- (1) Solenoid tube hex.17 [0,67] - Torque 22-24 Nm [16-18 ft-lb]
- (2) Ring nut for coil locking - Torque 5-6 Nm [4-5 ft-lb]
- (3) O-Ring Ø 14x1,78 [0,55x0,07]

Characteristic curves

Measured with hydraulic fluid ISO-VG46 at 40±5°C (104°F ±41°F)



Internal leakage on C ports:
 MAX 15 cm³/min (0,91 in³/min)
 Mineral oil with 32 cSt viscosity, at 40° C (104° F) and 100 bar (1400 psi) pressure.

*	OPERATED	<i>Circuit</i>	*	MANUAL OVERRIDE	*	DRAIN	<i>Circuit</i>						
E	Electric 		S	Standard 	N	Internal 							
N	Hydraulic/pneumatic 		V	Screw 	E	External 							
			N	Without manual override	PORTS <table border="1"> <tr> <td>***</td> <td>Main (C)</td> <td>Drain (D)</td> </tr> <tr> <td>G14</td> <td>1/4" Gas</td> <td>1/4" Gas</td> </tr> </table> <p>Other port sizes available</p>			***	Main (C)	Drain (D)	G14	1/4" Gas	1/4" Gas
***	Main (C)	Drain (D)											
G14	1/4" Gas	1/4" Gas											
			CIRCUIT		N - Seals in NBR V - Seals in VITON								

ESFB - 025 - * * A * - ** - * - * ** * ****

*	Voltage (V)	Resistance (Ω) ±7%	Power (W)	Current (A)
-	Without coil			
A	12 DC	5,53	26	2,16
B	24 DC	22,1	26	1,08
Other voltages available on request				

*	COIL	Type	Protection class
-	Without coil		
HR	DIN 43650 - ISO 4400 Class H	M14	IP65
AJ	AMP JUNIOR Class H	M14	IP65
DT	DEUTSCH DT04-2P-L Class H	M14	IP69

TYPE OF MOUNTING

*	Port number	Screw Tie rods	Installation torque	
-	6	-	-	
08	8	M5x92 [M5x3,62]	5-6 Nm [4-5 ft-lb]	
10	10	M5x138 [M5x5,43]	5-6 Nm [4-5 ft-lb]	
12	12	M5x184 [M5x7,24]	5-6 Nm [4-5 ft-lb]	
14	14	-	-	