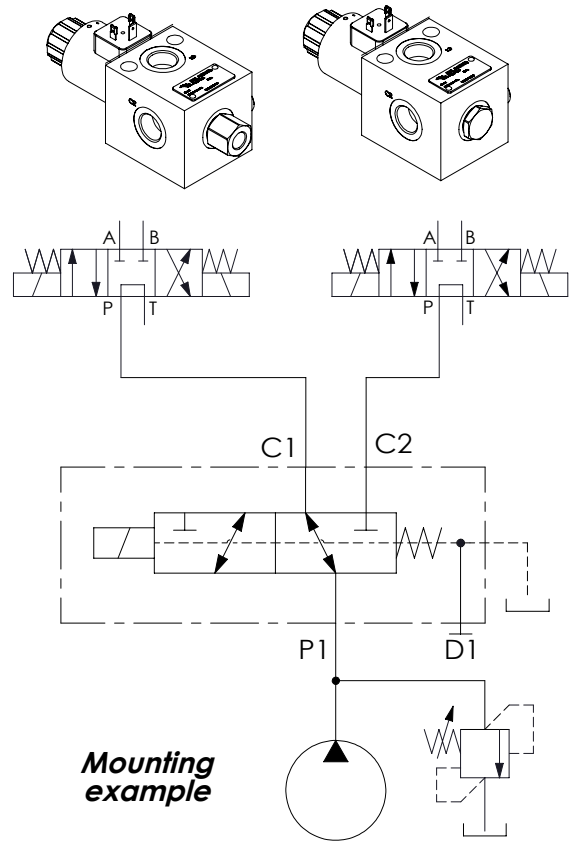


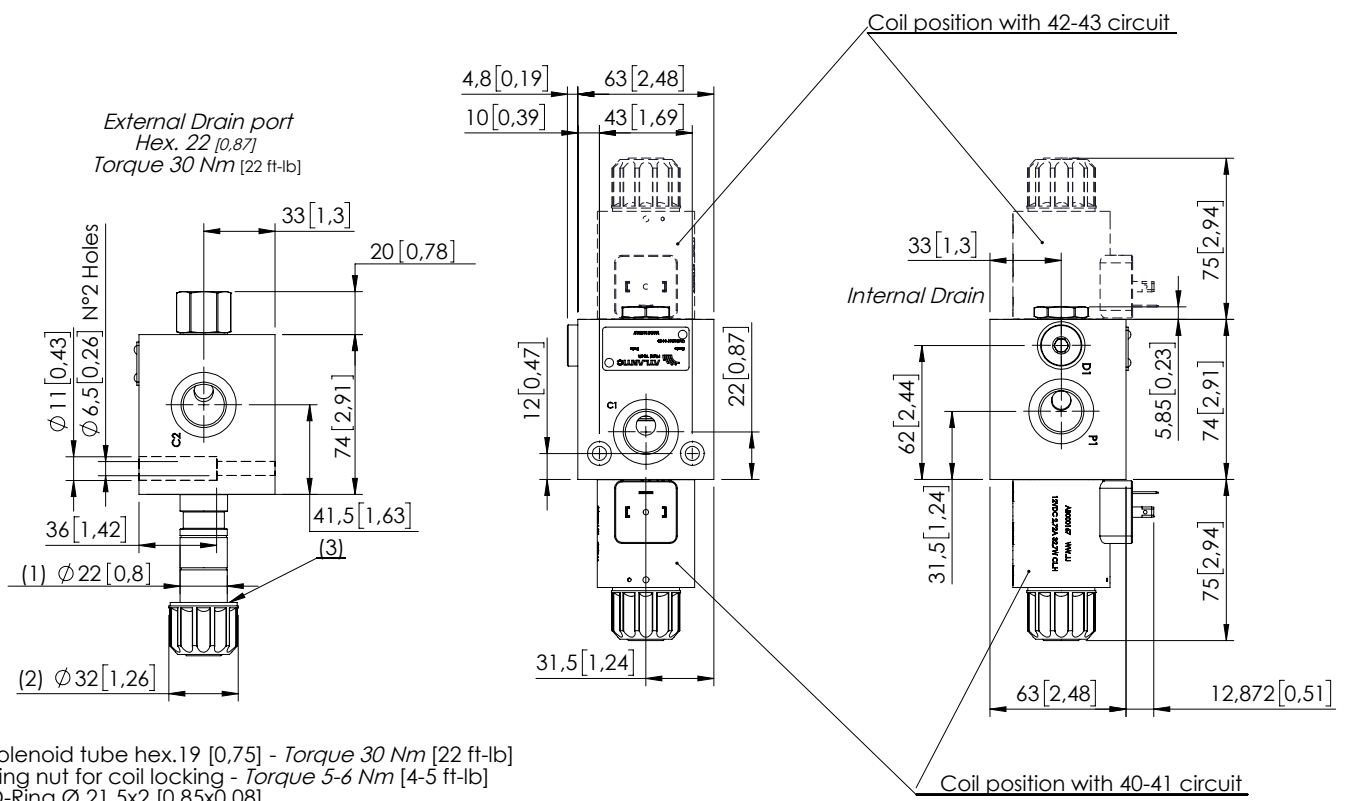
**	Circuit	Transit position
40		
41		
42		
43		



Technical data			
Rated flow		l/min (gpm)	100 (26)
Operating pressure	with internal drain "N"	bar (psi)	250 (3600)
	with external drain "E"	bar (psi)	310 (4500)
Valve weight		Kg (lb)	2,6 (5,7)

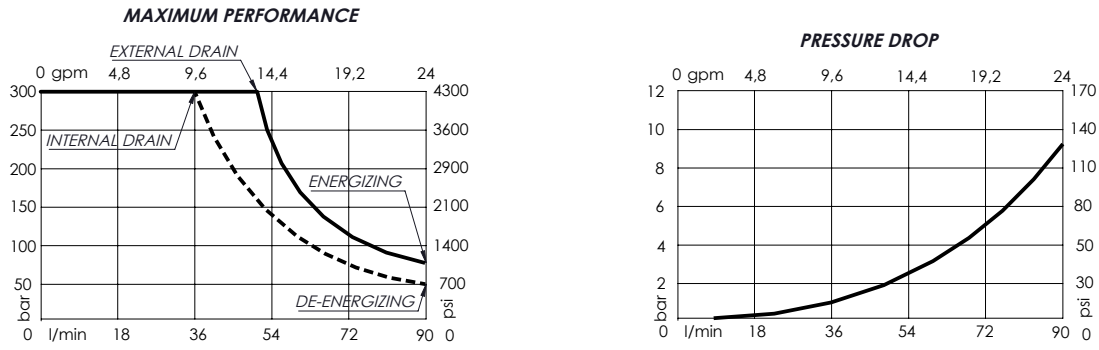
OVERALL DIMENSIONS

Dimensions: mm [inches]



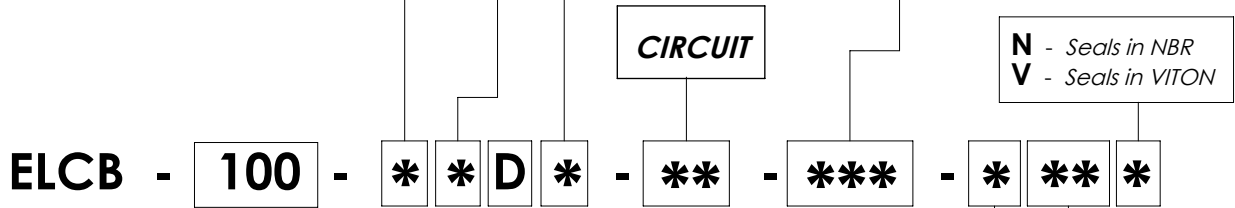
Characteristic curves

Measured with hydraulic fluid ISO-VG46 at 40°±5°C (104° F ± 41°F)



Internal leakage on C ports: MAX 25 cm³/min (1.5 in³/min) Mineral oil with 32 cSt viscosity, at 40° C (104° F) and 100 bar (1400 psi) pressure.

*	OPERATED	<i>Circuit</i>	*	MANUAL OVERRIDE	*	DRAIN	<i>Circuit</i>											
E	Electric 		S	Standard 	N	Internal 												
N	Hydraulic/pneumatic 		V	Screw 	N	External 												
<p>(4) Hydraulic or pneumatic pilot connector: Torque 20-22 Nm [15-16 ft-lb]</p> <p>With external drain Pilot Pressure Min. 5 bar [70 psi]</p> <p>With internal drain Pilot Pressure is 1/10 of the working pressure</p>			N	Without manual override (Only for hydraulic version)		<p>PORTS</p> <table border="1"> <tr> <td>***</td> <td>Main (C)</td> <td>Drain (D)</td> </tr> <tr> <td>G12</td> <td>1/2" Gas</td> <td>1/4" Gas</td> </tr> <tr> <td></td> <td></td> <td></td> </tr> <tr> <td colspan="3">Other port sizes available</td> </tr> </table>		***	Main (C)	Drain (D)	G12	1/2" Gas	1/4" Gas				Other port sizes available	
***	Main (C)	Drain (D)																
G12	1/2" Gas	1/4" Gas																
Other port sizes available																		



*	Voltage (V)	Resistance (Ω) ± 7%	Power (W)	Current (A)
-	Without coil			
A	12 DC	4,41	32,7	2,72
B	24 DC	18,6	31	1,29
Other voltages available on request				

*	COIL	Type	Protection class
-	Without coil		
HR	DIN 43650 - ISO 4400 Class H	M12	IP65
AJ	AMP JUNIOR Class H	M12	IP65
DT	DEUTSCH DT04-2P-L Class H	M12	IP69