

EBLE-040-CCLM

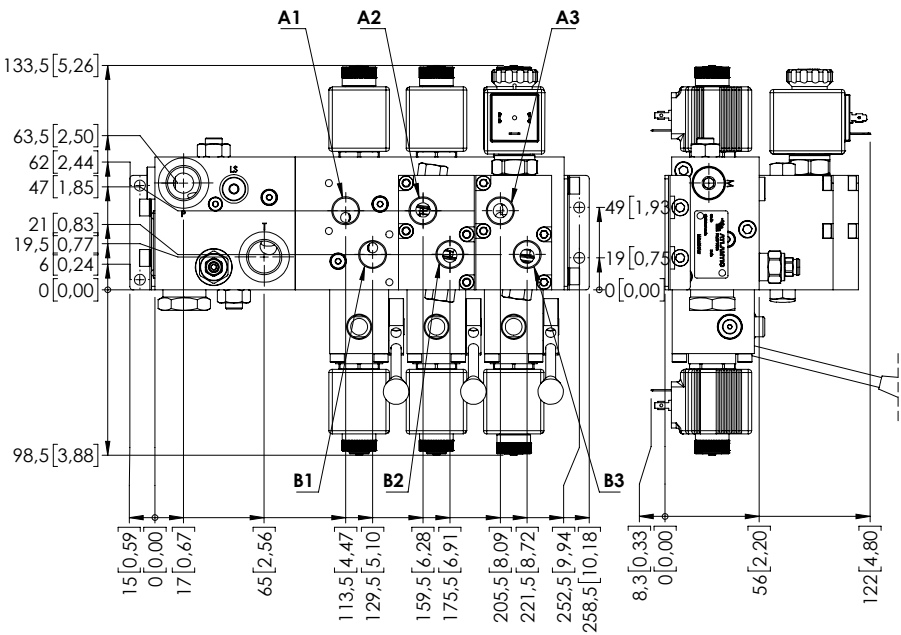


SPECIFICATIONS

Max. operating pressure:	210 bar (3000 psi)
Rated flow:	40 l/min (11 gpm)
Manifold:	Cast-Iron
Weight:	10,6 kg (23,3 lbs)
Contamination class to ISO 4406:	See technical spec.
MTTF _d :	150 years

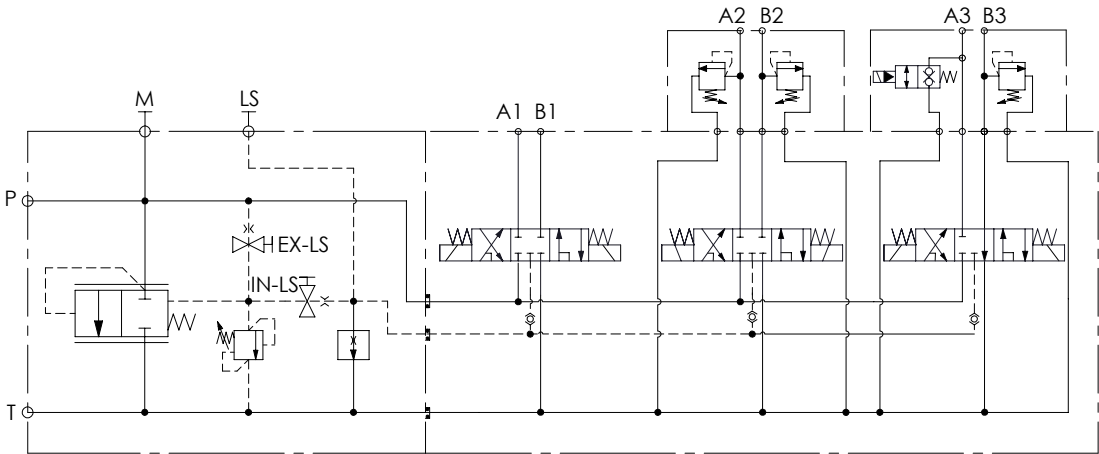
NOTES

For other configurations/quick codes not available in this catalogue page please consult factory



Dimensions: mm [inches]

SCHEME



ORDERING CODES

Quick code	Description	Ports	Voltage	Connector type:	
EB000042	EBLE-040-CCLM-MX-G12-BHRN	A,B: G3/8" P,T: G1/2" M: G1/4" LS: G1/8"	24V DC	DIN 43650	