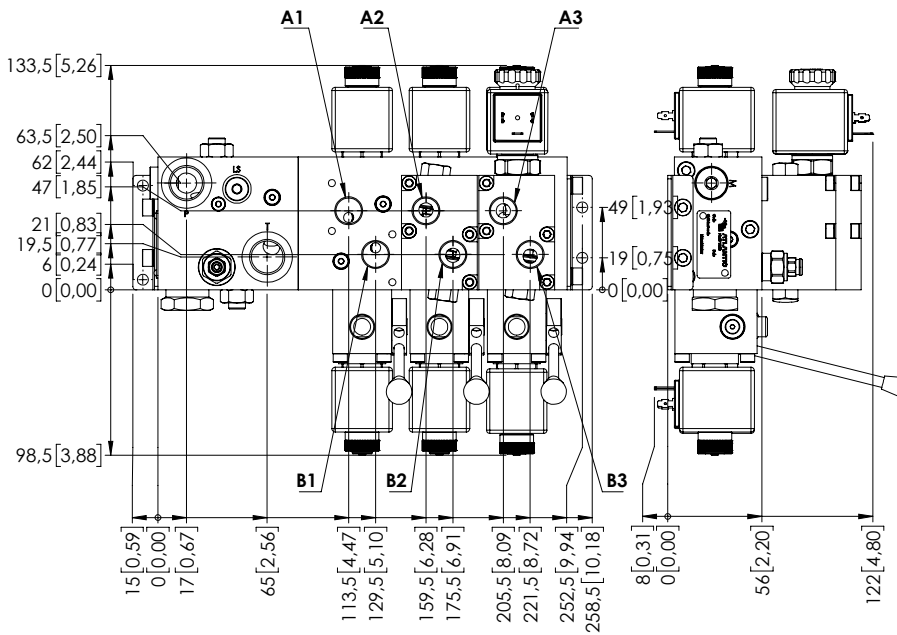


# EBLE-040-CCLM

## SPECIFICATIONS

|                                  |                                       |
|----------------------------------|---------------------------------------|
| Max. operating pressure:         | 210 bar (3000 psi)                    |
| Rated flow:                      | 40 l/min (11 gpm)                     |
| Manifold:                        | Cast-Iron                             |
| Weight:                          | 10,6 kg (23,3 lbs)                    |
| Contamination class to ISO 4406: | See technical spec.                   |
| MTF <sub>a</sub> :               | 150 - 1200 years: See technical spec. |

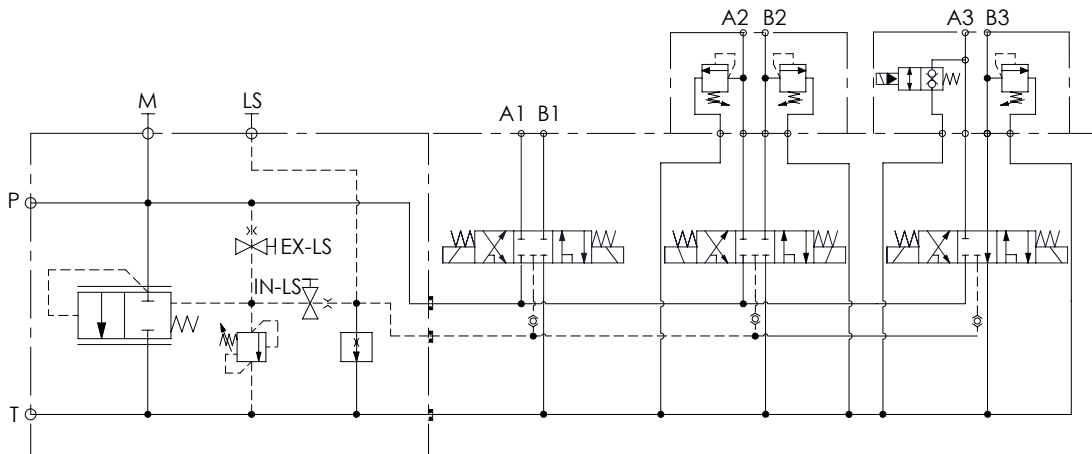


Dimensions: mm [inches]

## NOTES

For other configurations/quick codes not available in this catalogue page please consult factory

## SCHEME



## ORDERING CODES

| Quick code | Description               | Ports                                       | Voltage | Connector type: |
|------------|---------------------------|---|---------|-----------------|
| EB000042   | EBLE-040-CCLM-MX-G12-BHRN | A,B: G3/8" P,T: G1/2"<br>M: G1/4" LS: G1/8" | 24V DC  | DIN 43650       |
|            |                           |   |         |                 |
|            |                           |   |         |                 |
|            |                           |   |         |                 |
|            |                           |   |         |                 |