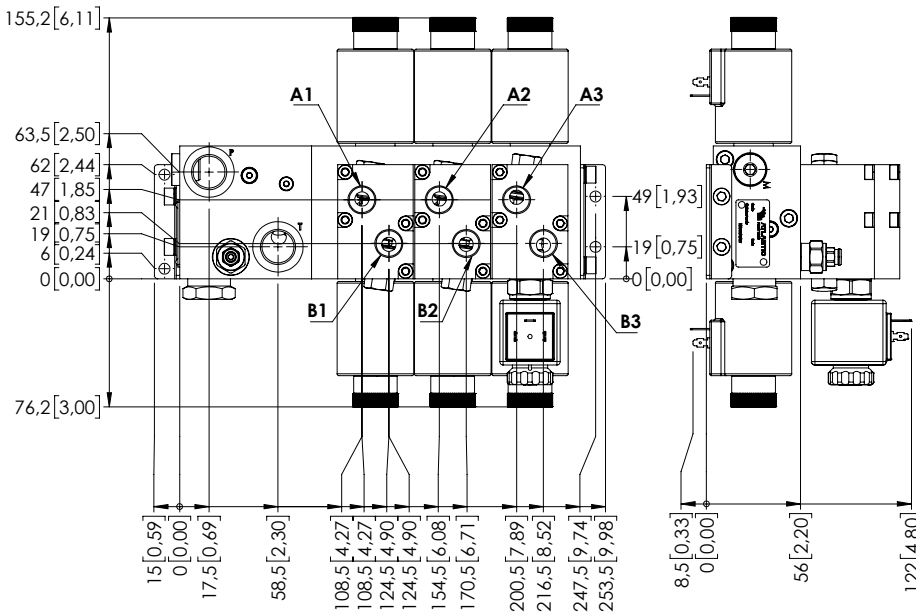


EBLE-040-CCSM

SPECIFICATIONS

Max. operating pressure:	210 bar (3000 psi)
Rated flow:	40 l/min (11 gpm)
Manifold:	Cast-Iron
Weight:	12,1 kg (26 lbs)
Contamination class to ISO 4406:	See technical spec.
MTFa:	150 - 1200 years: See technical spec.

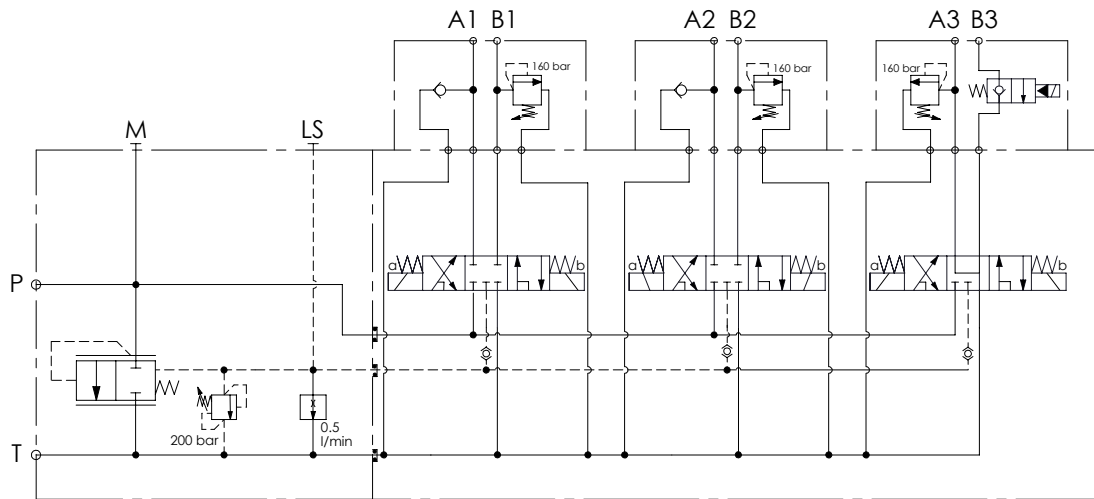


Dimensions: mm [inches]

NOTES

For other configurations/quick codes not available in this catalogue page please consult factory

SCHEME



ORDERING CODES

Quick code	Description	Ports	Voltage	Connector type:
EB000041	EBLE-040-CCSM-MX-G12-BHRN	A,B: G3/8" P,T: G1/2" M: G1/4"	24V DC	DIN 43650