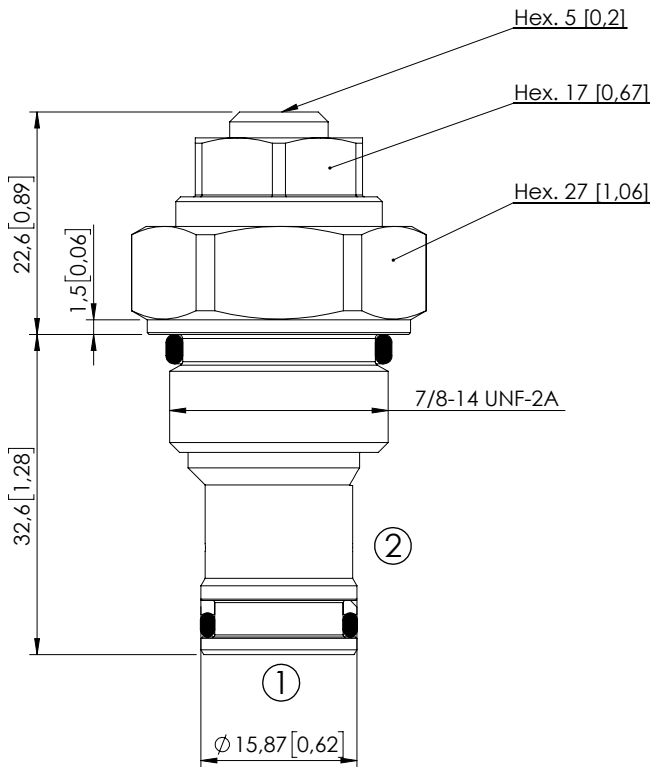
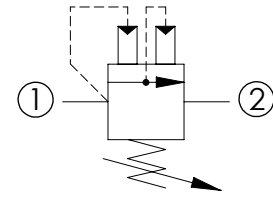


CPSK-001-PPNA

DIRECT ACTING
POPPET TYPE
KICK DOWN TYPE



Dimensions: mm [inches]



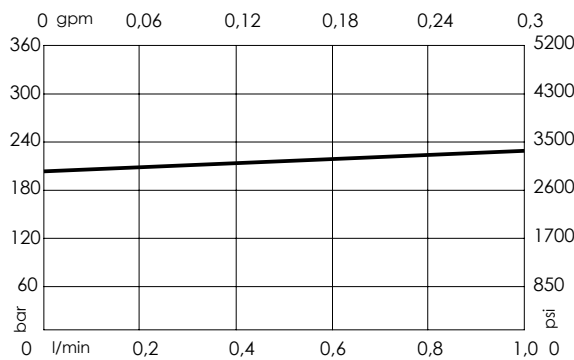
SPECIFICATIONS

| | |
|----------------------------------|----------------------------|
| Max. operating pressure: | 350 bar (5000 psi) |
| Rated flow: | 1 l/min (0,3 gpm) |
| Cavity: | SAE-10-2N |
| Weight: | 0,13 kg (0,29 lbs) |
| Contamination class to ISO 4406: | See technical spec. |
| Seal kit: | RA700082 |
| Installation torque: | 55 - 62 Nm (41 - 46 ft-lb) |
| MTF _d : | 150 years |

NOTES

When the pressure exceeds the setting of the valve the poppet opens and unload the system to 10 bar. The valve closes when the flow is reduced to 0 l/min.

CURVES



ORDERING CODES

| Quick code | Description | Standard setting (cracking pressure) | Adjustment range | Pressure increase |
|------------|---------------------------|--------------------------------------|-----------------------------|-------------------------------|
| CP000227 | CPSK-001-PPNA-SN-S10-N350 | 350 bar (2500 psi) | 140-350 bar (2000-5000 psi) | 70,5 bar/turn (1000 psi/turn) |
| | | | | |
| | | | | |
| | | | | |
| | | | | |