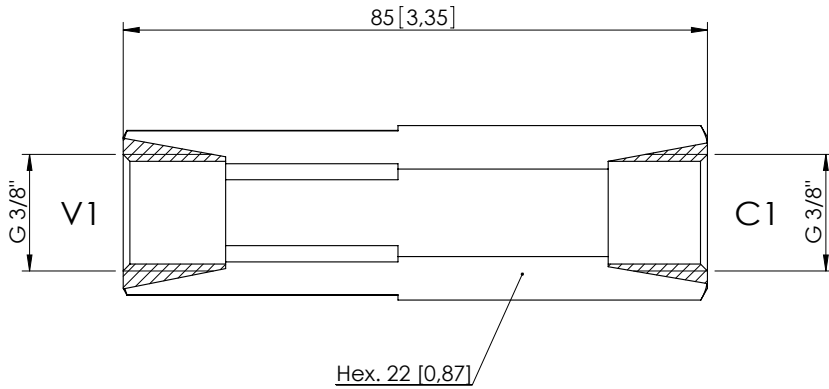
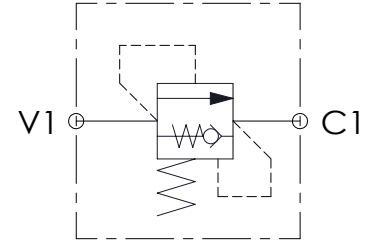


SEQUENCE SLEEVE VALVE

CPSN-060-DPGD

DIRECT ACTING
WITH ANTI-CAVITATION
POPPET TYPE



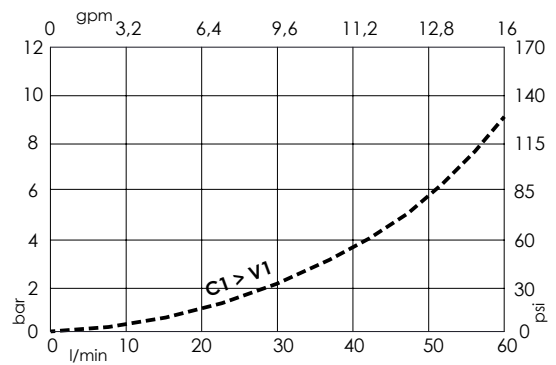
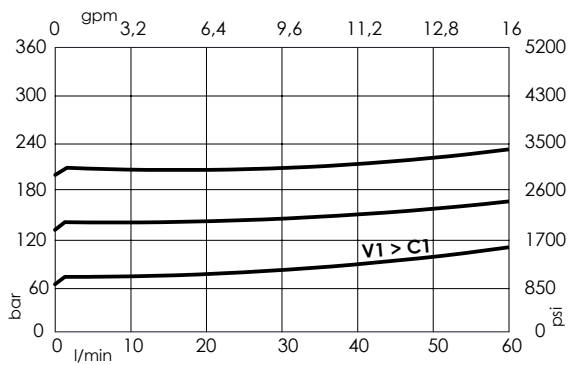
SPECIFICATIONS

Max. operating pressure:	350 bar (5000 psi)
Rated flow:	60 l/min (16 gpm)
Ports:	G 3/8"
Weight:	0,2 kg (0,44 lbs)
Leakage:	1 cm ³ /min (0,06 in ³ /min) to 80% of nominal set point
Manifold:	Steel
Contamination class to ISO 4406:	See technical spec.
MTF _d :	150 years

Dimensions: mm [inches]

NOTES

CURVES



ORDERING CODES

Quick code	Standard setting Q=1 l/min (0,3 gpm)	Quick code	Standard setting Q=1 l/min (0,3 gpm)	Quick code	Standard setting Q=1 l/min (0,3 gpm)	Quick code	Standard setting Q=1 l/min (0,3 gpm)
CP000194	20 bar (300 psi)	CP000203	80 bar (1200 psi)	CP000210	140 bar (2000 psi)	CP000216	200 bar (2900 psi)
CP000197	30 bar (400 psi)	CP000204	90 bar (1300 psi)	CP000211	150 bar (2200 psi)	CP000217	210 bar (3000 psi)
CP000198	40 bar (600 psi)	CP000205	100 bar (1400 psi)	CP000212	160 bar (2300 psi)		
CP000199	50 bar (700 psi)	CP000206	110 bar (1600 psi)	CP000213	170 bar (2500 psi)		
CP000200	60 bar (900 psi)	CP000207	120 bar (1700 psi)	CP000214	180 bar (2600 psi)		
CP000201	70 bar (1000 psi)	CP000208	130 bar (1900 psi)	CP000215	190 bar (2800 psi)		