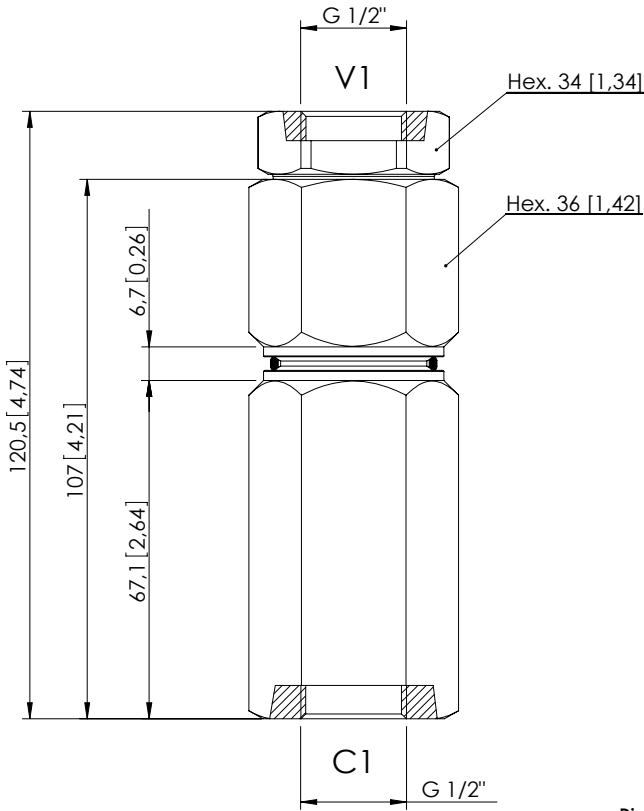


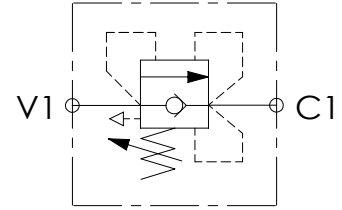
SEQUENCE VALVE

CPST-100-DHLD

DIFFERENTIAL AREA
POPPET TYPE
COMPENSATED



Dimensions: mm [inches]

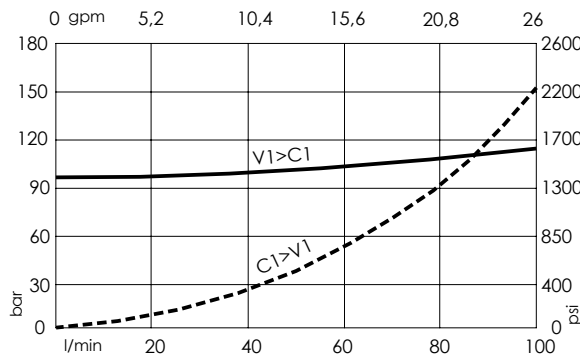


SPECIFICATIONS

Max. operating pressure:	350 bar (5000 psi)
Rated flow:	100 l/min (26 gpm)
Body:	Steel
Weight:	0,82 kg (1,81 lbs)
Contamination class to ISO 4406:	See technical spec.
MTTFa:	150 years

NOTES

CURVES



ORDERING CODES

Quick code	Description	Main ports size	Standard setting Q=5 l/min (1,3 gpm)	Adjustment range	Pressure increase
CP00092	CPST-100-DHLD-GN-G12-N140	V1,C1: G1/2"	100 bar (1400 psi)	50-140 bar (700-2000 psi)	27 bar/turn (400 psi/turn)
CP000269	CPST-100-DHLD-GN-G12-N220	V1,C1: G1/2"	200 bar (2900 psi)	100-220 bar (1400-3200 psi)	39 bar/turn (550 psi/turn)