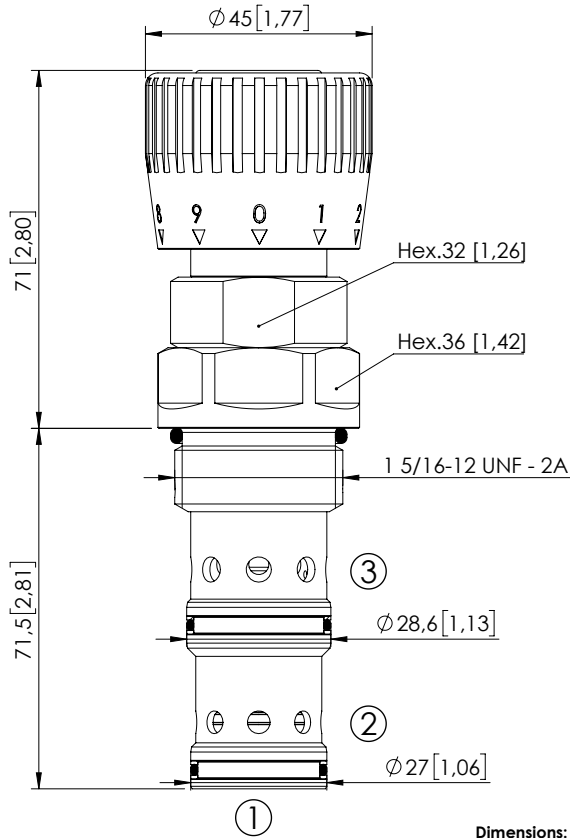
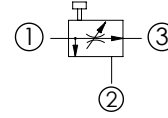


CFPT-140-MMRR

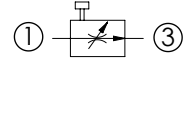
3 WAYS FLOW REGULATOR
ADJUSTABLE SETTING



Dimensions: mm [inches]



3 way application



2 way application, port 2 not connected

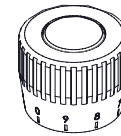
SPECIFICATIONS

Max. operating pressure:	350 bar (5000 psi)
Rated flow:	140 l/min (37 gpm)
Cavity:	SAE-16-3N
Weight:	0,7 kg (1,54 lbs)
Seal kit:	RB700094
Installation torque:	118 - 132 Nm (160 - 179 ft-lb)
Contamination class to ISO 4406:	See technical spec.
MTF _a :	150 - 1200 years: See technical spec.

NOTES

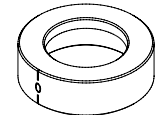
If port 2 is blocked the valve operates as a two way flow regulator. Port 2 can be pressurized.
For other configurations/quick codes not available in this catalogue page please consult factory

OPTIONS



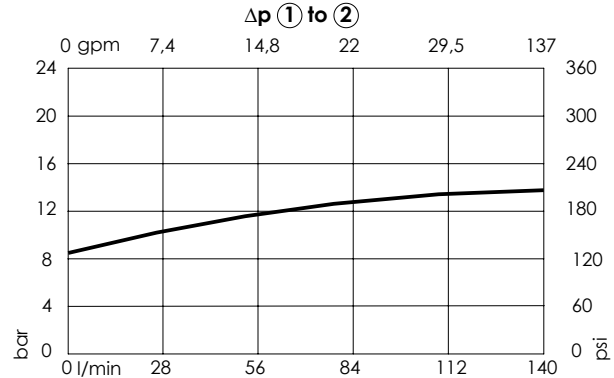
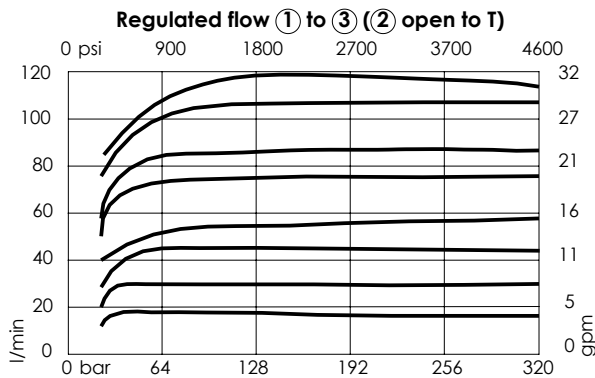
Graduated handknob for flow regulation under pressure

The washer is used to indicate the zero.



Ordering code: SV000083

CURVES



ORDERING CODES

Quick code	Description	Regulated flow range	Adjustment option
CF000310	CFPT-140-MMRR-15-S16-N350	0-15 l/min (0-4 gpm)	Graduated handknob
CF000311	CFPT-140-MMRR-25-S16-N350	0-25 l/min (0-7 gpm)	Graduated handknob
CF000312	CFPT-140-MMRR-40-S16-N350	0-40 l/min (0-11 gpm)	Graduated handknob
CF000313	CFPT-140-MMRR-50-S16-N350	0-50 l/min (0-13 gpm)	Graduated handknob
CF000314	CFPT-140-MMRR-65-S16-N350	0-65 l/min (0-17 gpm)	Graduated handknob
CF000315	CFPT-140-MMRR-80-S16-N350	0-80 l/min (0-21 gpm)	Graduated handknob
CF000450	CFPT-140-MMRR-100-S16-N350	0-100 l/min (0-27 gpm)	Graduated handknob
CF000451	CFPT-140-MMRR-120-S16-N350	0-120 l/min (0-32 gpm)	Graduated handknob