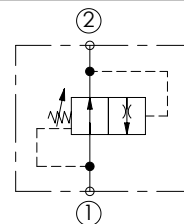
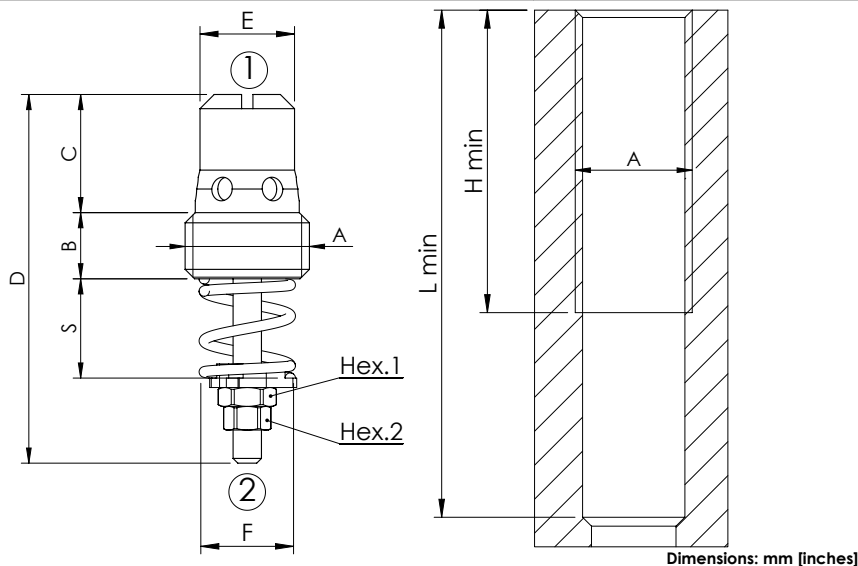


## CFST-XXX-MDST

2 WAYS COMPENSATED  
INSERT TYPE

## SPECIFICATIONS

Max. operating pressure: 300 bar (4300 psi)

Contamination class to ISO 4406: See technical spec.

MTTF<sub>d</sub>: 150 years

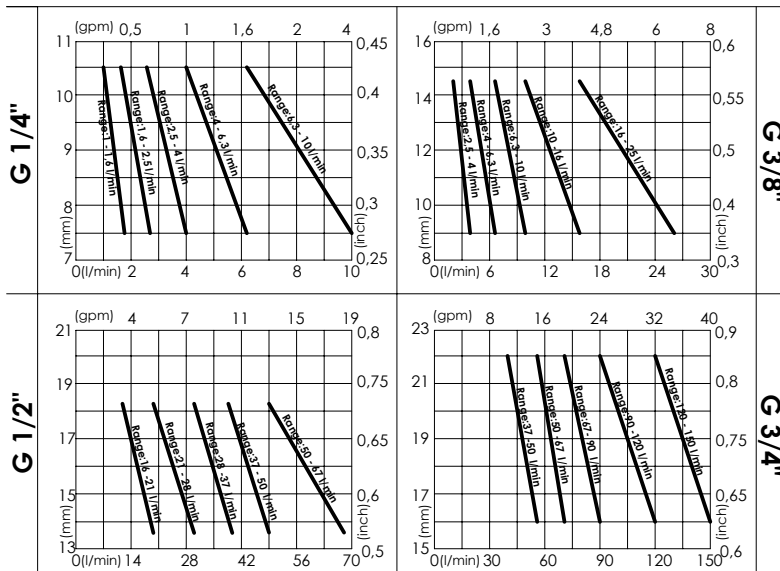
## NOTES

For sleeve housing consult Accessories section  
For other configurations/quick codes  
not available in this catalogue page please  
consult factory

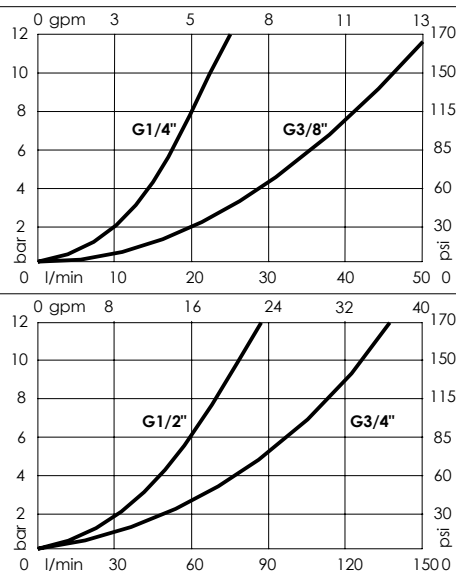
## SPECIFICATIONS

| A      | B         | C           | D         | E           | F           | H min     | L min     | Hex. 1     | Hex. 2     | Installation torque | Max. flow 2→1      | Max. flow 1→2      | Weight          |
|--------|-----------|-------------|-----------|-------------|-------------|-----------|-----------|------------|------------|---------------------|--------------------|--------------------|-----------------|
| G 1/4" | 7 [0,27]  | 12,5 [0,49] | 39 [1,54] | 10 [0,39]   | 10,5 [0,41] | 33 [1,30] | 55 [2,17] | 5,5 [0,22] | 4,5 [0,18] | 6 Nm (4 lb/fb)      | 10 l/min (3 gpm)   | 15 l/min (4 gpm)   | 13 g (0,03 lbs) |
| G 3/8" | 7 [0,27]  | 13,5 [0,53] | 43 [1,69] | 11,5 [0,45] | 13,5 [0,53] | 34 [1,34] | 60 [2,36] | 7 [0,27]   | 6 [0,24]   | 8 Nm (6 lb/fb)      | 25 l/min (7 gpm)   | 30 l/min (8 gpm)   | 23 g (0,05 lbs) |
| G 1/2" | 8 [0,31]  | 16 [0,63]   | 49 [1,93] | 15 [0,59]   | 18 [0,71]   | 40 [1,57] | 70 [2,76] | 7 [0,27]   | 6 [0,24]   | 12 Nm (9 lb/fb)     | 67 l/min (18 gpm)  | 90 l/min (24 gpm)  | 40 g (0,08 lbs) |
| G 3/4" | 10 [0,39] | 21 [0,83]   | 61 [2,40] | 20 [0,79]   | 23 [0,91]   | 51 [2,01] | 80 [3,15] | 7 [0,27]   | 6 [0,24]   | 16 Nm (12 lb/fb)    | 150 l/min (40 gpm) | 150 l/min (40 gpm) | 80 g (0,17 lbs) |

## CURVES: SETTING LENGTH S



## CURVES: 1&gt;2



## ORDERING CODES

| G 1/4"     |                             | G 3/8"     |                          | G 1/2"     |                         | G 3/4"     |                           |
|------------|-----------------------------|------------|--------------------------|------------|-------------------------|------------|---------------------------|
| Quick code | Flow range adjustment       | Quick code | Flow range adjustment    | Quick code | Flow range adjustment   | Quick code | Flow range adjustment     |
| CF000104   | 1-1,6 l/min (0,3-0,4 gpm)   | CF000099   | 2,5-4 l/min (0,7-1 gpm)  | CF000093   | 16-21 l/min (4-6 gpm)   | CF000096   | 37-50 l/min (10-13 gpm)   |
| CF000105   | 1,6-2,5 l/min (0,4-0,7 gpm) | CF000100   | 4-6,3 l/min (1-1,7 gpm)  | CF000094   | 21-28 l/min (6-7 gpm)   | CF000097   | 50-67 l/min (13-18 gpm)   |
| CF000106   | 2,5-4 l/min (0,7-1 gpm)     | CF000101   | 6,3-10 l/min (1,7-3 gpm) | CF000095   | 28-37 l/min (7-10 gpm)  | CF000098   | 67-90 l/min (18-24 gpm)   |
| CF000107   | 4-6,3 l/min (1-1,7 gpm)     | CF000102   | 10-16 l/min (3-4 gpm)    | CF000081   | 37-50 l/min (10-13 gpm) | CF000083   | 90-120 l/min (24-32 gpm)  |
| CF000108   | 6,3-10 l/min (1,7-3 gpm)    | CF000103   | 16-25 l/min (4-7 gpm)    | CF000082   | 50-67 l/min (13-18 gpm) | CF000092   | 120-150 l/min (32-40 gpm) |