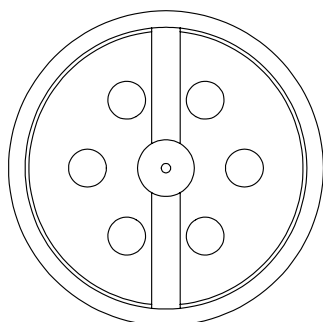
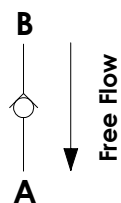
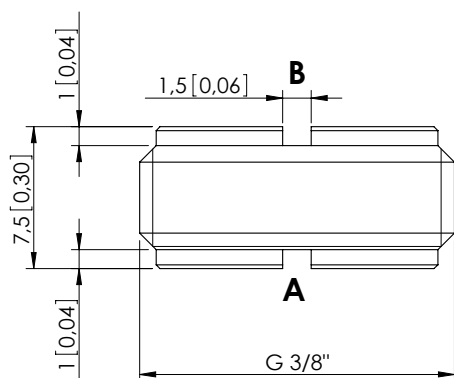
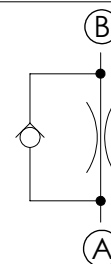


CFFN-030-MFSR

INSERT TYPE
DOUBLE MOUNTING

Dimensions: mm [inches]



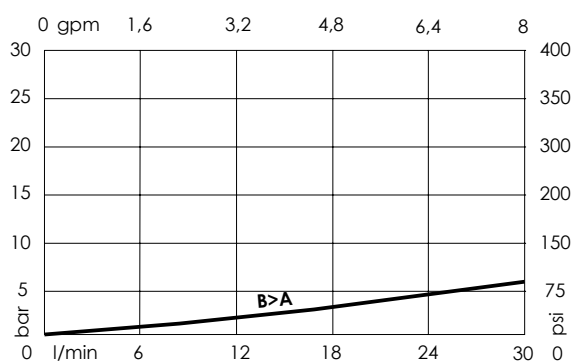
SPECIFICATIONS

| | |
|----------------------------------|---------------------|
| Max. operating pressure: | 350 bar (5000 psi) |
| Rated flow: | 30 l/min (8 gpm) |
| Cavity: | G 3/8" |
| Weight: | 0,01 kg (0,02 lbs) |
| Installation torque: | 10 Nm (7 ft-lb) |
| Contamination class to ISO 4406: | See technical spec. |
| MTTFd: | 150 years |

NOTES

For other configurations/quick codes not available in this catalogue page please consult factory

CURVES



ORDERING CODES

| Quick code | Description | Ø Orifice | Quick code | Description | Ø Orifice |
|------------|---------------------------|-------------|------------|---------------------------|-------------|
| CF000068 | CFFN-030-MFSR-05-G38-N350 | 0,5 [0,019] | CF000197 | CFFN-030-MFSR-13-G38-N350 | 1,3 [0,051] |
| CF000069 | CFFN-030-MFSR-06-G38-N350 | 0,6 [0,023] | CF000198 | CFFN-030-MFSR-14-G38-N350 | 1,4 [0,055] |
| CF000070 | CFFN-030-MFSR-07-G38-N350 | 0,7 [0,027] | CF000074 | CFFN-030-MFSR-15-G38-N350 | 1,5 [0,059] |
| CF000071 | CFFN-030-MFSR-08-G38-N350 | 0,8 [0,031] | CF000199 | CFFN-030-MFSR-16-G38-N350 | 1,6 [0,063] |
| CF000195 | CFFN-030-MFSR-09-G38-N350 | 0,9 [0,035] | CF000200 | CFFN-030-MFSR-17-G38-N350 | 1,7 [0,067] |
| CF000072 | CFFN-030-MFSR-10-G38-N350 | 1 [0,039] | CF000201 | CFFN-030-MFSR-18-G38-N350 | 1,8 [0,071] |
| CF000196 | CFFN-030-MFSR-11-G38-N350 | 1,1 [0,043] | CF000202 | CFFN-030-MFSR-19-G38-N350 | 1,9 [0,074] |
| CF000073 | CFFN-030-MFSR-12-G38-N350 | 1,2 [0,047] | CF000125 | CFFN-030-MFSR-20-G38-N350 | 2 [0,079] |