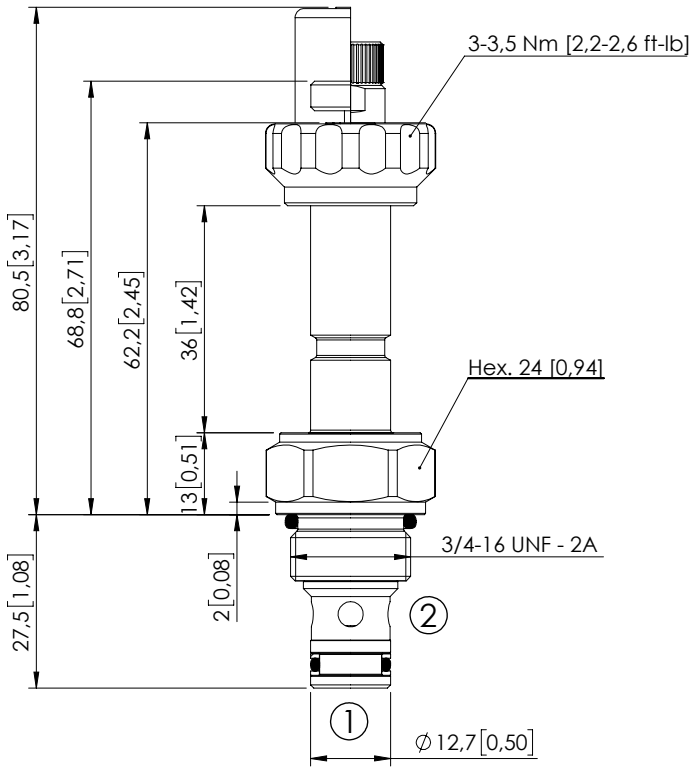


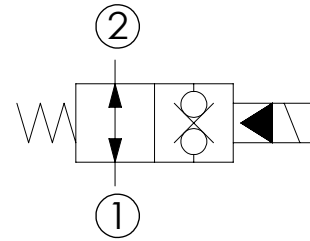
SOLENOID OPERATED CARTRIDGE

# CEBE-040-NAFN

PILOT OPERATED  
POPPET TYPE



Dimensions: mm [inches]



### SPECIFICATIONS


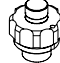
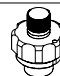
Max. operating pressure:	350 bar (5000 psi)
Rated flow:	40 l/min (11 gpm)
Cavity:	SAE-08-2N
Weight:	0,13 kg (0,29 lbs)
Min. voltage required:	90% of nominal
Coil type:	M7 or M3 type
Ambient temperature:	-20/+50 °C (-4/+122 °F)
Contamination class to ISO 4406:	See technical spec.
Seal kit:	RB900081
Installation torque:	45 - 50 Nm (33,2 - 36,9 ft-lb)
MTF <sub>d</sub> :	150 years

### NOTES

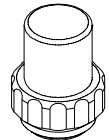
For other configurations/quick codes not available in this catalogue page please consult factory

### CURVES

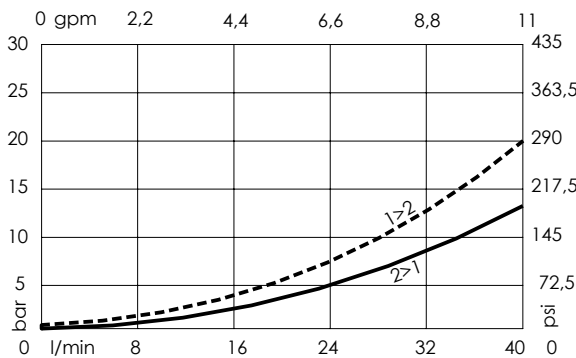
### OPTIONS

- Standard 
- Push style override 
- Knob style override 

### SEALING CAP



Ordering code:  
AT000113



### ORDERING CODES

Quick code	Description	Options	Max operating pressure
CE001877	CEBE-040-NAFN-32-S08-N350	Standard	350 bar (5000 psi)
CE001878	CEBE-040-NAFP-32-S08-N350	Push style override	350 bar (5000 psi)
CE001879	CEBE-040-NAFK-32-S08-N350	Knob style override	350 bar (5000 psi)