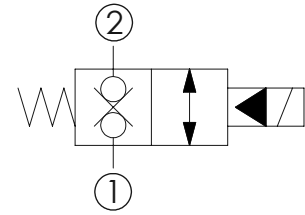
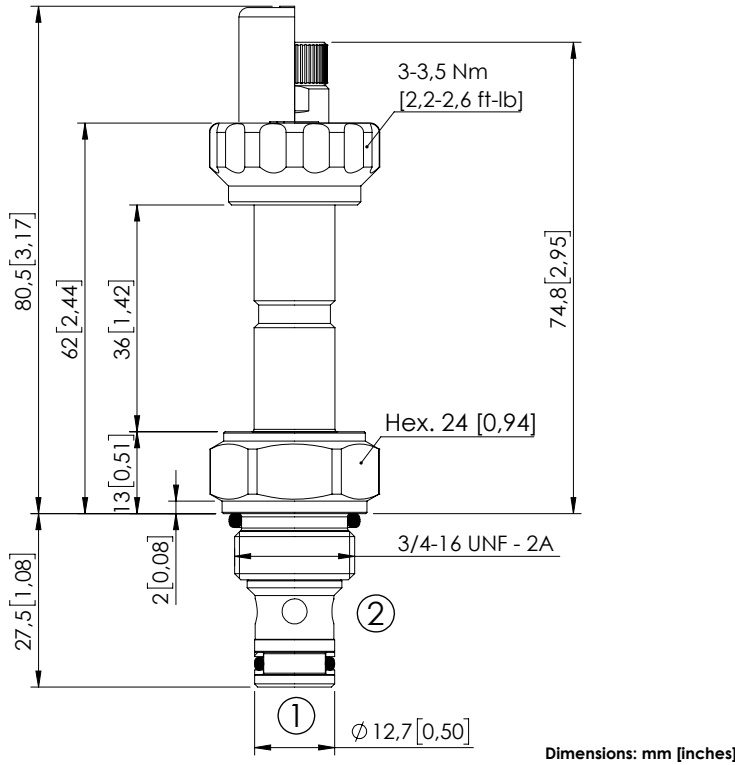


SOLENOID OPERATED CARTRIDGE

# CEBE-040-NCFN

PILOT OPERATED  
POPPET TYPE



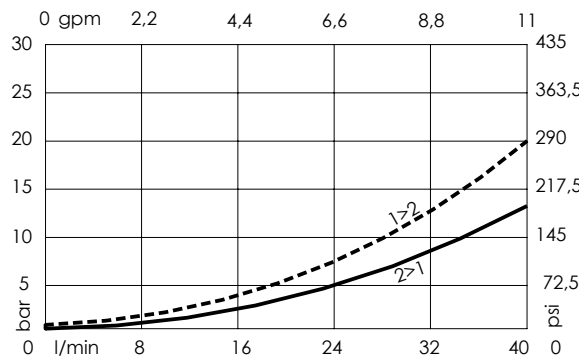
### SPECIFICATIONS

|                                  |                                |
|----------------------------------|--------------------------------|
| Max. operating pressure:         | 350 bar (5000 psi)             |
| Rated flow:                      | 40 l/min (11 gpm)              |
| Cavity:                          | SAE-08-2N                      |
| Weight:                          | 0,13 kg (0,29 lbs)             |
| Min. voltage required:           | 90% of nominal                 |
| Coil type:                       | M7 or M3 type                  |
| Ambient temperature:             | -20/+50 °C (-4/+122 °F)        |
| Contamination class to ISO 4406: | See technical spec.            |
| Seal kit:                        | RB900081                       |
| Installation torque:             | 45 - 50 Nm (33,2 - 36,9 ft-lb) |
| MTF <sub>d</sub> :               | 150 years                      |

### NOTES

For other configurations/quick codes not available in this catalogue page please consult factory

### CURVES



### OPTIONS

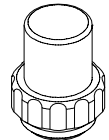
Standard



Knob style override



### SEALING CAP



Ordering code:  
AT000113

### ORDERING CODES

| Quick code | Description               | Options             | Max operating pressure |
|------------|---------------------------|---------------------|------------------------|
| CE001875   | CEBE-040-NCFN-31-S08-N350 | Standard            | 350 bar (5000 psi)     |
| CE001876   | CEBE-040-NCFK-31-S08-N350 | Knob style override | 350 bar (5000 psi)     |
|            |                           |                     |                        |
|            |                           |                     |                        |
|            |                           |                     |                        |
|            |                           |                     |                        |