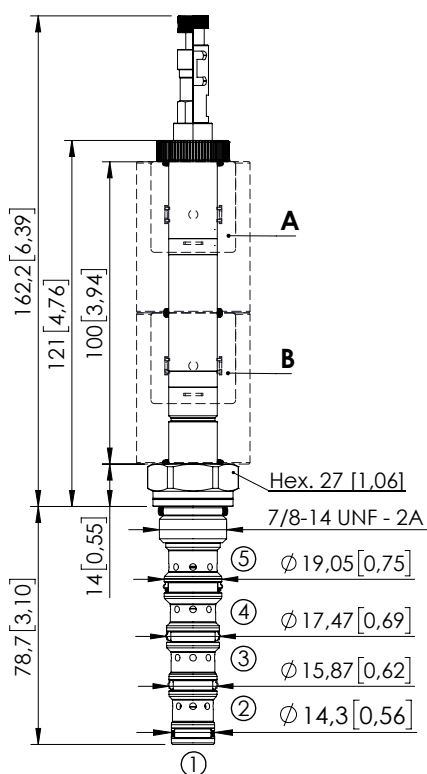
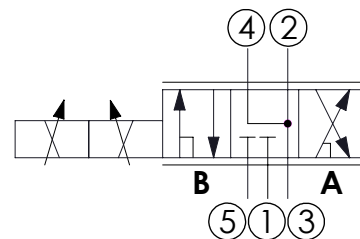


SOLENOID OPERATED CARTRIDGE

CEFS-030-SEPN-107DIRECT OPERATED
SPOOL TYPE

Dimensions: mm [inches]

**SPECIFICATIONS**

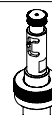
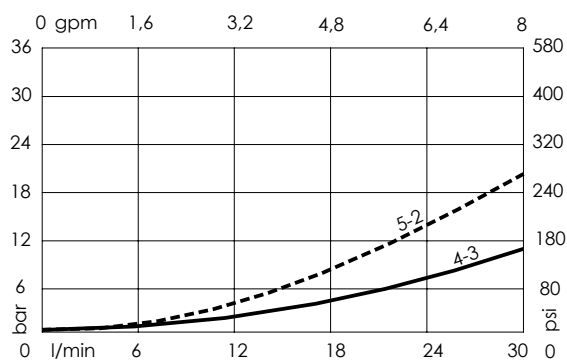
| | |
|------------------------------------|--|
| Max. operating pressure: | 350 bar (5000 psi) |
| Max. operating pressure on port 1: | 210 bar (3000 psi) |
| Rated flow: | 30 l/min (8 gpm) |
| Cavity: | SAE 10 5N |
| Weight: | 0,22 kg (0,68 lbs) |
| Min. voltage required: | 90% of nominal |
| Coil type: | M16 |
| Ambient temperature: | -20/+50 °C (-4/+122 °F) |
| Contamination class to ISO 4406: | See technical spec. |
| Seal kit: | RB900107 |
| Installation torque: | 55 - 62 Nm (41 - 46 ft-lb) |
| MTTFa: | 150 - 1200 years: See technical spec. |
| Leakage: | 120 cm ³ /min (@46 cSt) 7,3 in ³ /min (@46 cSt) |

NOTES

For other configurations/quick codes not available in this catalogue page please consult factory

OPTIONS

Standard

Push and
pull manual
overridePush pull and
twist manual
override**ORDERING CODES**

| Quick code | Description | Options | |
|------------|----------------------------|-------------------------------------|--|
| CE001865 | CEFS-030-SEPN-107-S10-N350 | Standard | |
| CE001866 | CEFS-030-SEPL-107-S10-N350 | Push and pull manual override | |
| CE001867 | CEFS-030-SEPG-107-S10-N350 | Push pull and twist manual override | |
| | | | |
| | | | |
| | | | |

Revision A