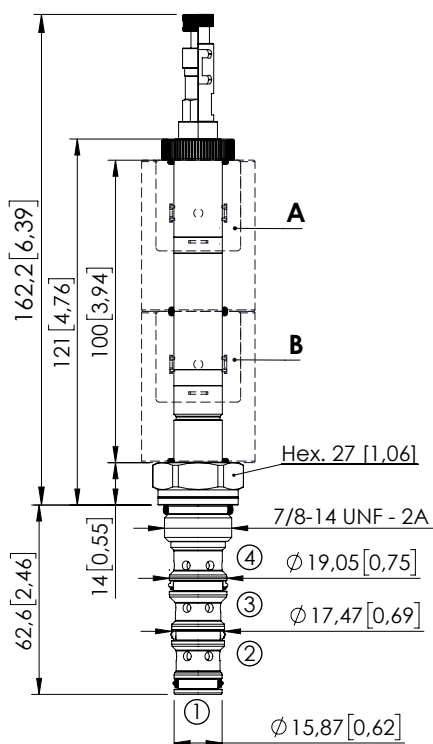
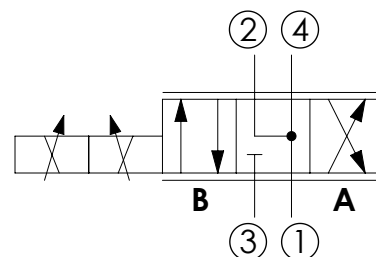


SOLENOID OPERATED CARTRIDGE

CEES-030-SEPN-52DIRECT OPERATED
SPOOL TYPE

Dimensions: mm [inches]

**SPECIFICATIONS**

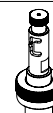
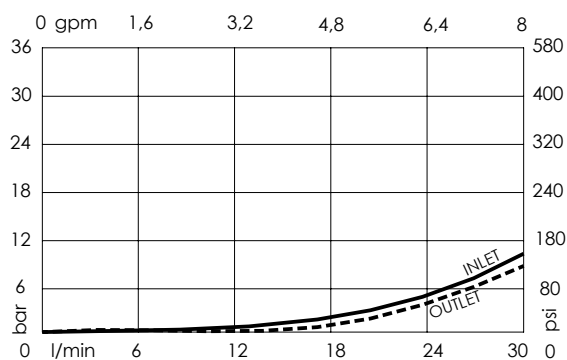
Max. operating pressure:	350 bar (5000 psi)
Max. operating pressure on port 1:	210 bar (3000 psi)
Rated flow:	30 l/min (8 gpm)
Cavity:	SAE-10-4N
Weight:	0,21 kg (0,68 lbs)
Min. voltage required:	90% of nominal
Coil type:	M16
Ambient temperature:	-20/+50 °C (-4/+122 °F)
Contamination class to ISO 4406:	See technical spec.
Seal kit:	RB600102
Installation torque:	55 - 62 Nm (41 - 46 ft-lb)
MTTFa:	150 - 1200 years: See technical spec.
Leakage:	120 cm ³ /min (@46 cSt) 7,3 in ³ /min (@46 cSt)

NOTES

For other configurations/quick codes not available in this catalogue page please consult factory

OPTIONS

Standard

Push and
pull manual
overridePush pull and
twist manual
override**ORDERING CODES**

Quick code	Description	Options	
CE001856	CEES-030-SEPN-52-S10-N350	Standard	
CE001857	CEES-030-SEPL-52-S10-N350	Push and pull manual override	
CE001858	CEES-030-SEPG-52-S10-N350	Push pull and twist manual override	

Revision D