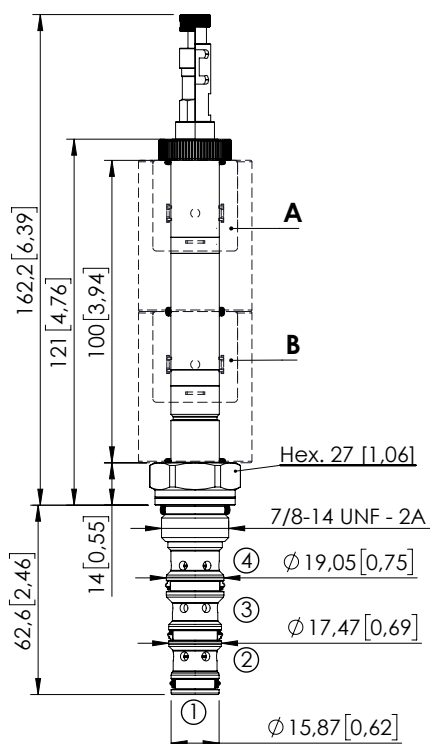
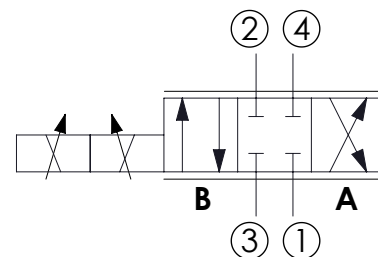
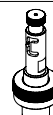


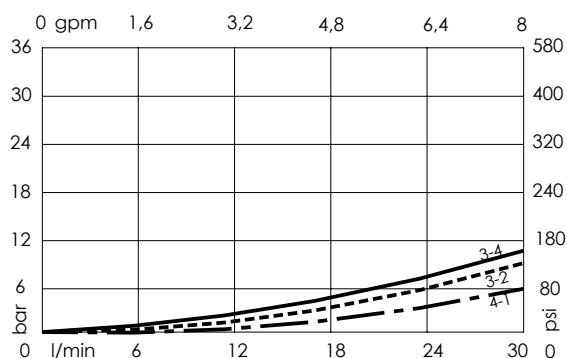
SOLENOID OPERATED CARTRIDGE

CEES-030-SEFN-51DIRECT OPERATED
SPOOL TYPE

Dimensions: mm [inches]

**SPECIFICATIONS**Max. operating pressure: **350 bar (5000 psi)**Max. operating pressure on port 1: **210 bar (3000 psi)**Rated flow: **30 l/min (8 gpm)**Cavity: **SAE-10-4N**Weight: **0,21 kg (0,68 lbs)**Min. voltage required: **90% of nominal**Coil type: **M16**Ambient temperature: **-20/+50 °C (-4/+122 °F)**Contamination class to ISO 4406: **See technical spec.**Seal kit: **RB600102**Installation torque: **55 - 62 Nm (41 - 46 ft-lb)**MTTFd: **150 years**Leakage: **120 cm³/min (@46 cSt)
7,3 in³/min (@46 cSt)****OPTIONS****Standard****Push and
pull manual
override****Push pull and
twist manual
override****NOTES**

For other configurations/quick codes not available in this catalogue page please consult factory

**ORDERING CODES**

Quick code	Description	Options	
CE001853	CEES-030-SEPN-51-S10-N350	Standard	
CE001854	CEES-030-SEPL-51-S10-N350	Push and pull manual override	
CE001855	CEES-030-SEPG-51-S10-N350	Push pull and twist manual override	

Revision A