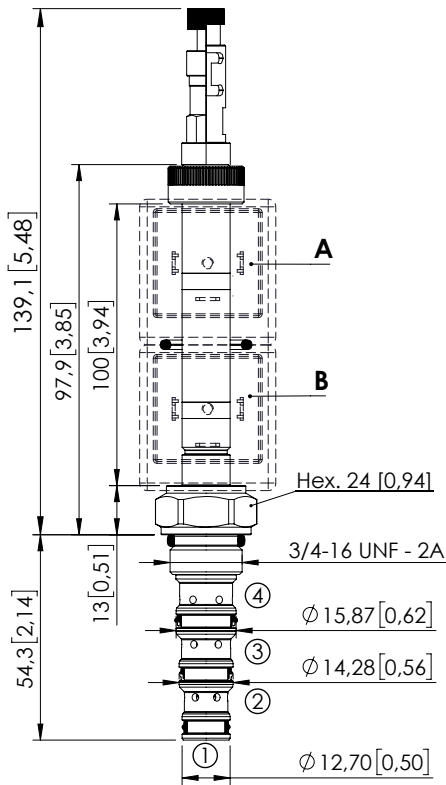


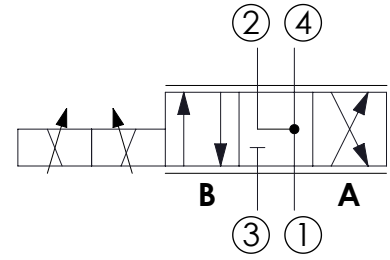
SOLENOID OPERATED CARTRIDGE

# CEES-010-SEPN-52

DIRECT OPERATED  
SPOOL TYPE



Dimensions: mm [inches]



## SPECIFICATIONS

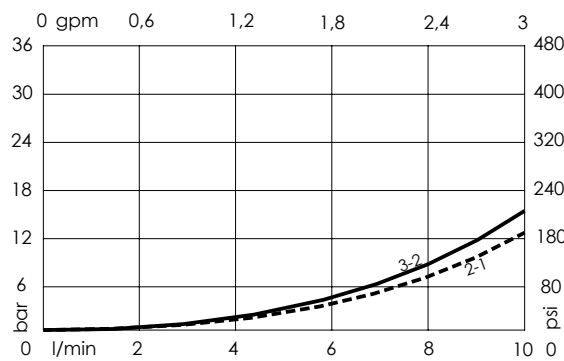
|                                    |                            |
|------------------------------------|----------------------------|
| Max. operating pressure:           | 350 bar (5000 psi)         |
| Max. operating pressure on port 1: | 210 bar (3000 psi)         |
| Rated flow:                        | 10 l/min (3 gpm)           |
| Cavity:                            | SAE-08-4N                  |
| Weight:                            | 0,13 kg (0,68 lbs)         |
| Min. voltage required:             | 90% of nominal             |
| Coil type:                         | M7 or M3 type              |
| Ambient temperature:               | -20/+50 °C (-4/+122 °F)    |
| PWM range recommended:             | 100 Hz                     |
| Contamination class to ISO 4406:   | See technical spec.        |
| Seal kit:                          | RB600101                   |
| Installation torque:               | 45 - 50 Nm (41 - 46 ft-lb) |

|                    |  |
|--------------------|--|
| MTF <sub>d</sub> : | 150 - 1200 years: See technical spec.                                    |
| Leakage:           | 120 cm <sup>3</sup> /min (@46 cSt)<br>7,3 in <sup>3</sup> /min (@46 cSt) |

## NOTES

For other configurations/quick codes not available in this catalogue page please consult factory

## OPTIONS



## ORDERING CODES

| Quick code | Description               | Options                             |
|------------|---------------------------|-------------------------------------|
| CE001835   | CEES-010-SEPN-52-S08-N350 | Standard                            |
| CE001836   | CEES-010-SEPL-52-S08-N350 | Push and pull manual override       |
| CE001837   | CEES-010-SEPG-52-S08-N350 | Push pull and twist manual override |
|            |                           |                                     |
|            |                           |                                     |
|            |                           |                                     |