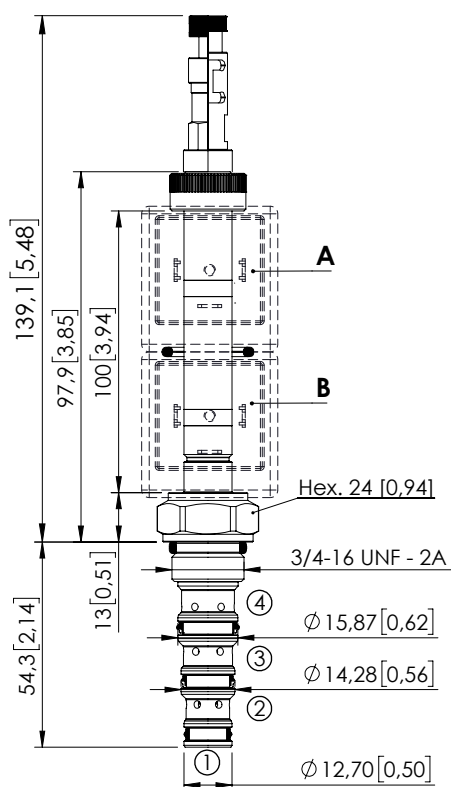
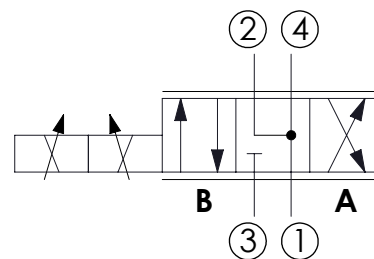


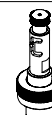
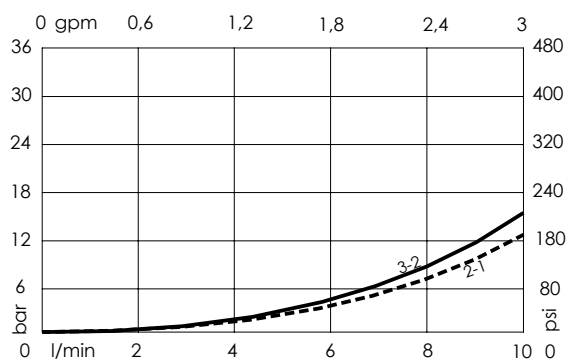
SOLENOID OPERATED CARTRIDGE

CEES-010-SEPN-52DIRECT OPERATED
SPOOL TYPE

Dimensions: mm [inches]

**SPECIFICATIONS**Max. operating pressure: **350 bar (5000 psi)**Max. operating pressure on port 1: **210 bar (3000 psi)**Rated flow: **10 l/min (3 gpm)**Cavity: **SAE-08-4N**Weight: **0,13 kg (0,68 lbs)**Min. voltage required: **90% of nominal**Coil type: **M7 or M3 type**Ambient temperature: **-20/+50 °C (-4/+122 °F)**Contamination class to ISO 4406: **See technical spec.**Seal kit: **RB600101**Installation torque: **45 - 50 Nm (41 - 46 ft-lb)**MTTFa: **150 - 1200 years: See technical spec.**Leakage: **120 cm³/min (@46 cSt)
7,3 in³/min (@46 cSt)****NOTES**

For other configurations/quick codes not available in this catalogue page please consult factory

OPTIONS**Standard****Push and
pull manual
override****Push pull and
twist manual
override****ORDERING CODES**

Quick code	Description	Options	
CE001835	CEES-010-SEPN-52-S08-N350	Standard	
CE001836	CEES-010-SEPL-52-S08-N350	Push and pull manual override	
CE001837	CEES-010-SEPG-52-S08-N350	Push pull and twist manual override	

Revision B