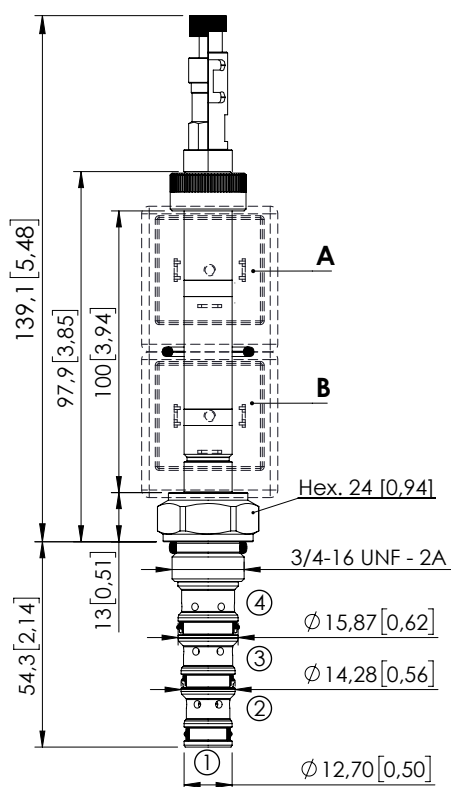
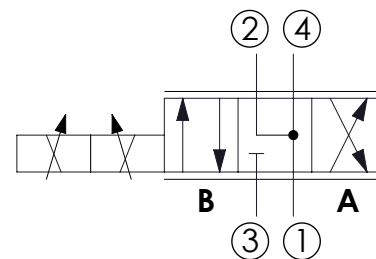


SOLENOID OPERATED CARTRIDGE

CEES-010-SEPN-52DIRECT OPERATED
SPOOL TYPE

Dimensions: mm [inches]

**SPECIFICATIONS**

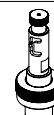
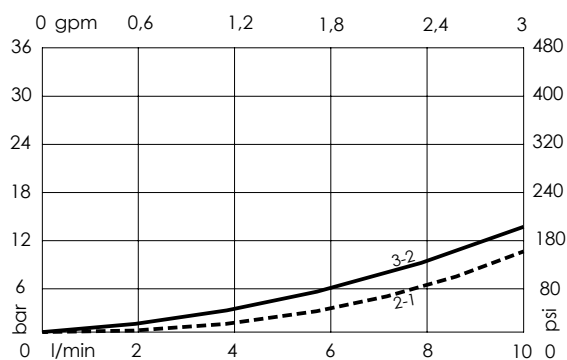
Max. operating pressure:	350 bar (5000 psi)
Max. operating pressure on port 1:	210 bar (3000 psi)
Rated flow:	10 l/min (8 gpm)
Cavity:	SAE-08-4N
Weight:	0,13 kg (0,68 lbs)
Min. voltage required:	90% of nominal
Coil type:	M7 or M3 type
Ambient temperature:	-20/+50 °C (-4/+122 °F)
Contamination class to ISO 4406:	See technical spec.
Seal kit:	RB600101
Installation torque:	45 - 50 Nm (41 - 46 ft-lb)
MTF _a :	150 years
Leakage:	120 cm ³ /min (@46 cSt) 7,3 in ³ /min (@46 cSt)

NOTES

For other configurations/quick codes not available in this catalogue page please consult factory

OPTIONS

Standard

Push and
pull manual
overridePush pull and
twist manual
override**ORDERING CODES**

Quick code	Description	Options	
CE001835	CEES-010-SEPN-52-S08-N350	Standard	
CE001836	CEES-010-SEPL-52-S08-N350	Push and pull manual override	
CE001837	CEES-010-SEPG-52-S08-N350	Push pull and twist manual override	

Revision A