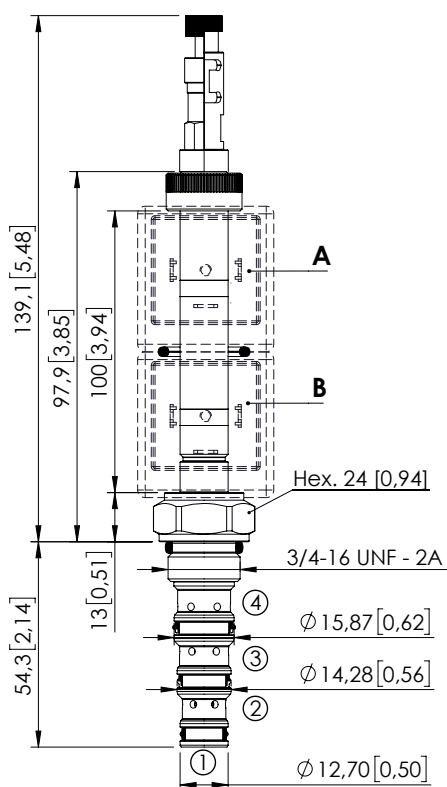


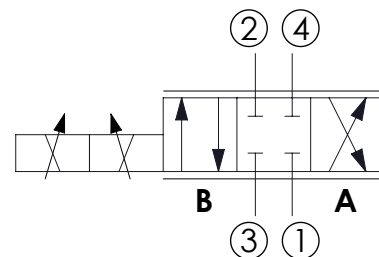
# SOLENOID OPERATED CARTRIDGE

## CEES-010-SEPN-51

DIRECT OPERATED  
SPOOL TYPE



Dimensions: mm [inches]



### SPECIFICATIONS

Max. operating pressure:	350 bar (5000 psi)
Max. operating pressure on port 1:	210 bar (3000 psi)
Rated flow:	10 l/min (8 gpm)
Cavity:	SAE-08-4N
Weight:	0,13 kg (0,68 lbs)
Min. voltage required:	90% of nominal
Coil type:	M7 or M3 type
Ambient temperature:	-20/+50 °C (-4/+122 °F)
Contamination class to ISO 4406:	See technical spec.
Seal kit:	RB600101
Installation torque:	45 - 50 Nm (41 - 46 ft-lb)
MTF <sub>d</sub> :	150 years
Leakage:	120 cm <sup>3</sup> /min (@46 cSt) 7,3 in <sup>3</sup> /min (@46 cSt)

### NOTES

For other configurations/quick codes not available in this catalogue page please consult factory

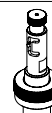
### OPTIONS



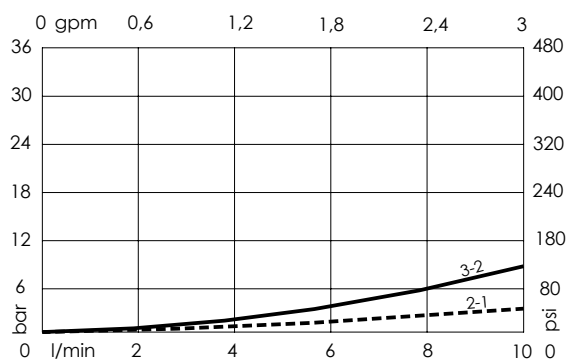
Standard



Push and  
pull manual  
override



Push pull and  
twist manual  
override



### ORDERING CODES

Quick code	Description	Options	
CE001832	CEES-010-SEPN-51-S08-N350	Standard	
CE001833	CEES-010-SEPL-51-S08-N350	Push and pull manual override	
CE001834	CEES-010-SEPG-51-S08-N350	Push pull and twist manual override	