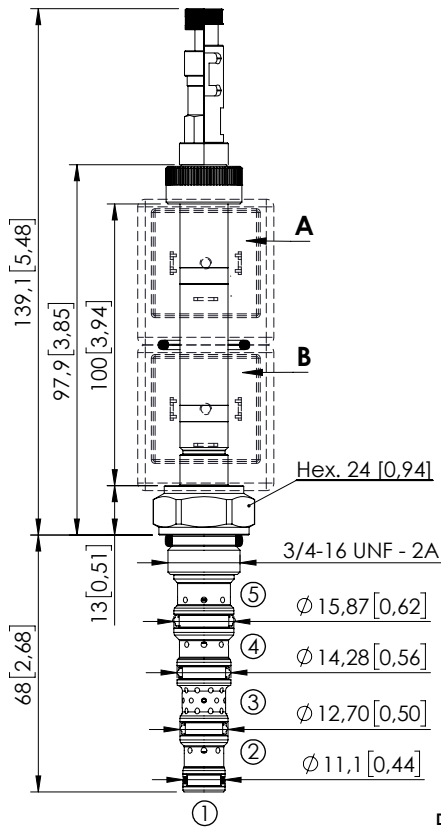


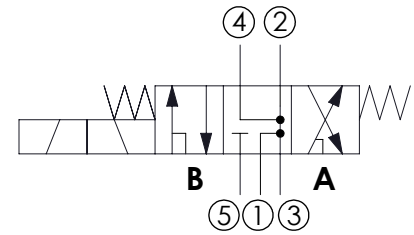
SOLENOID OPERATED CARTRIDGE

CEFS-010-SEFN-115

DIRECT OPERATED
SPOOL TYPE



Dimensions: mm [inches]



SPECIFICATIONS

| | |
|------------------------------------|--|
| Max. operating pressure: | 350 bar (5000 psi) |
| Max. operating pressure on port 1: | 210 bar (3000 psi) |
| Rated flow: | 10 l/min (3 gpm) |
| Cavity: | SAE-08-5N |
| Weight: | 0,25 kg (0,68 lbs) |
| Min. voltage required: | 90% of nominal |
| Coil type: | M7 or M6 type |
| Ambient temperature: | -20/+50 °C (-4/+122 °F) |
| Contamination class to ISO 4406: | See technical spec. |
| Seal kit: | RB900106 |
| Installation torque: | 45 - 50 Nm (41 - 46 ft-lb) |
| MTF _a : | 150 - 1200 years: See technical spec. |
| Leakage: | 120 cm ³ /min (@46 cSt) 7,3 in ³ /min (@46 cSt) |

NOTES

For other configurations/quick codes not available in this catalogue page please consult factory

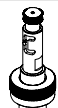
OPTIONS



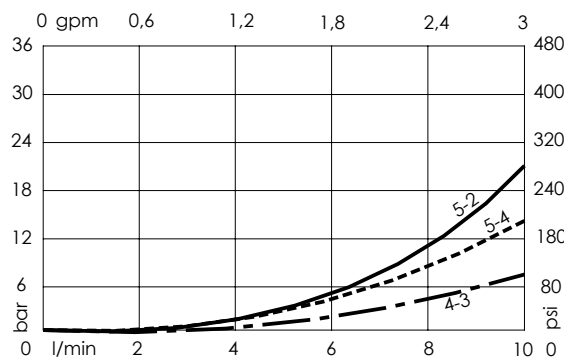
Standard



Push and pull manual override



Push pull and twist manual override



ORDERING CODES

| Quick code | Description | Options |
|------------|----------------------------|-------------------------------------|
| CE001823 | CEFS-010-SEFN-115-S08-N350 | Standard |
| CE001824 | CEFS-010-SEFL-115-S08-N350 | Push and pull manual override |
| CE001825 | CEFS-010-SEFG-115-S08-N350 | Push pull and twist manual override |
| | | |
| | | |
| | | |