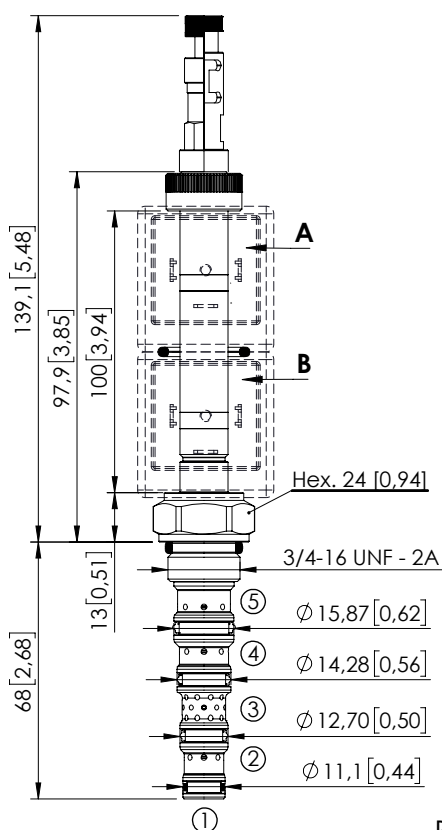
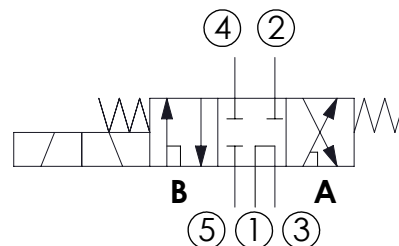


## SOLENOID OPERATED CARTRIDGE

**CEFS-010-SEFN-108**DIRECT OPERATED  
SPOOL TYPE

Dimensions: mm [inches]

**SPECIFICATIONS**

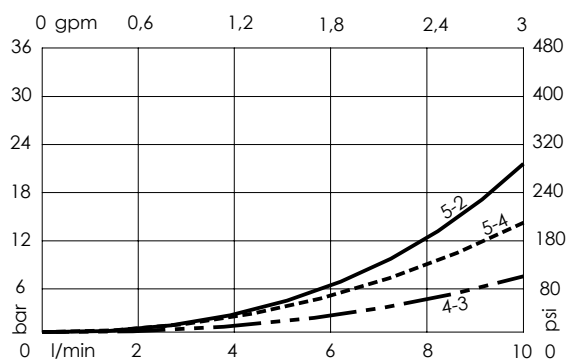
Max. operating pressure:	350 bar (5000 psi)
Max. operating pressure on port 1:	210 bar (3000 psi)
Rated flow:	10 l/min (3 gpm)
Cavity:	SAE-08-5N
Weight:	0,25 kg (0,68 lbs)
Min. voltage required:	90% of nominal
Coil type:	M7 or M3 type
Ambient temperature:	-20/+50 °C (-4/+122 °F)
Contamination class to ISO 4406:	See technical spec.
Seal kit:	RB900106
Installation torque:	45 - 50 Nm (41 - 46 ft-lb)
MTTFd:	150 - 1200 years: See technical spec.
Leakage:	120 cm <sup>3</sup> /min (@46 cSt) 7,3 in <sup>3</sup> /min (@46 cSt)

**NOTES**

For other configurations/quick codes not available in this catalogue page please consult factory

**OPTIONS**

Standard

Push and  
pull manual  
overridePush pull and  
twist manual  
override**ORDERING CODES**

Quick code	Description	Options	
CE001820	CEFS-010-SEFN-108-S08-N350	Standard	
CE001821	CEFS-010-SEFL-108-S08-N350	Push and pull manual override	
CE001822	CEFS-010-SEFG-108-S08-N350	Push pull and twist manual override	

Revision A