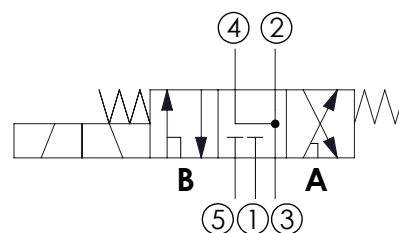
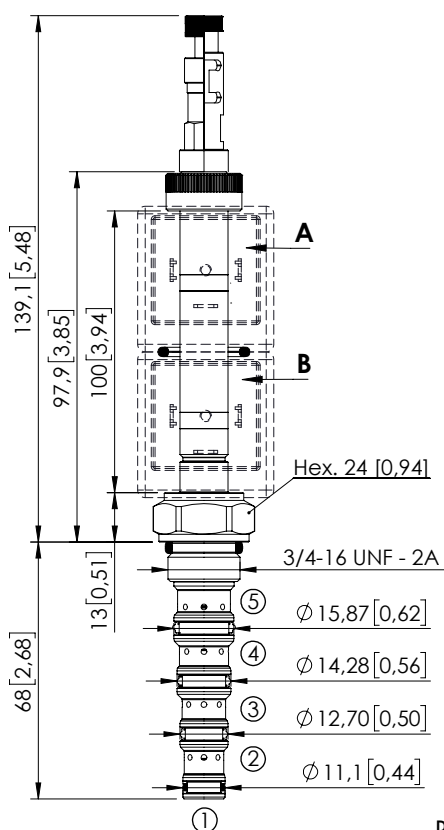


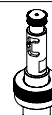
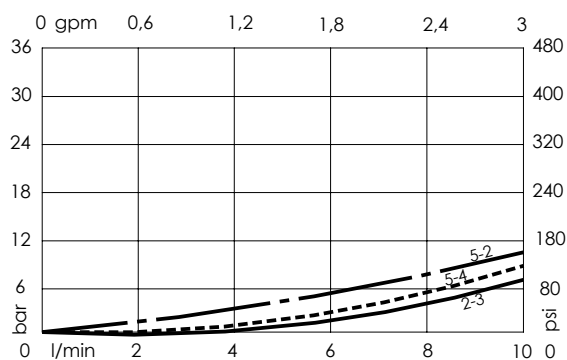
## SOLENOID OPERATED CARTRIDGE

**CEFS-010-SEFN-107**DIRECT OPERATED  
SPOOL TYPE**SPECIFICATIONS**Max. operating pressure: **350 bar (5000 psi)**Max. operating pressure on port 1: **210 bar (3000 psi)**Rated flow: **10 l/min (3 gpm)**Cavity: **SAE-08-5N**Weight: **0,25 kg (0,68 lbs)**Min. voltage required: **90% of nominal**Coil type: **M7 or M3 type**Ambient temperature: **-20/+50 °C (-4/+122 °F)**Contamination class to ISO 4406: **See technical spec.**Seal kit: **RB900106**Installation torque: **45 - 50 Nm (41 - 46 ft-lb)**MTTFa: **150 - 1200 years: See technical spec.**Leakage: **120 cm<sup>3</sup>/min (@46 cSt)  
7,3 in<sup>3</sup>/min (@46 cSt)****NOTES**

For other configurations/quick codes not available in this catalogue page please consult factory

**OPTIONS**

Standard

Push and  
pull manual  
overridePush pull and  
twist manual  
override**ORDERING CODES**

Quick code	Description	Options	
CE001817	CEFS-010-SEFN-107-S08-N350	Standard	
CE001818	CEFS-010-SEFL-107-S08-N350	Push and pull manual override	
CE001819	CEFS-010-SEFG-107-S08-N350	Push pull and twist manual override	