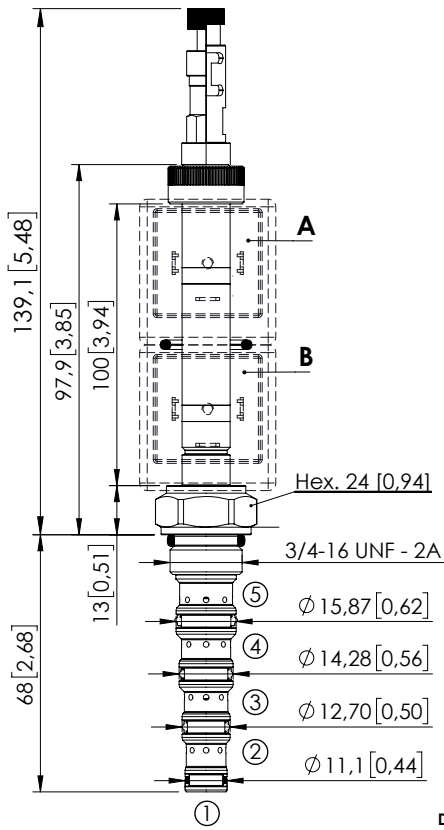
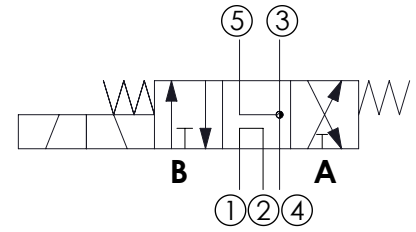


# CEFS-010-SEFN

DIRECT OPERATED  
SPOOL TYPE



Dimensions: mm [inches]



## SPECIFICATIONS

Max. operating pressure:	350 bar (5000 psi)
Max. operating pressure on port 1:	210 bar (3000 psi)
Rated flow:	10 l/min (8 gpm)
Cavity:	SAE-08-5N
Weight:	0,25 kg (0,68 lbs)
Min. voltage required:	90% of nominal
Coil type:	M7 or M3 type
Ambient temperature:	-20/+50 °C (-4/+122 °F)
Contamination class to ISO 4406:	See technical spec.
Seal kit:	RB900106
Installation torque:	45 - 50 Nm (41 - 46 ft-lb)
MTF <sub>a</sub> :	150 years
Leakage:	120 cm <sup>3</sup> /min (@46 cSt) 7,3 in <sup>3</sup> /min (@46 cSt)

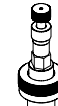
## NOTES

For other configurations/quick codes not available in this catalogue page please consult factory

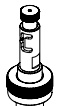
## OPTIONS



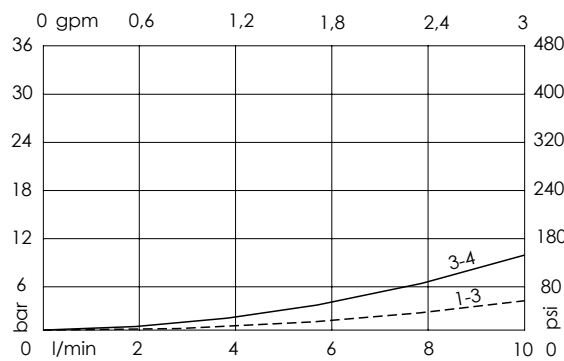
Standard



Push and pull  
manual  
override



Push pull and twist  
manual  
override



## ORDERING CODES

Quick code	Description	Options
CE001808	CEFS-010-SEFN-104-S08-N350	Standard
CE001809	CEFS-010-SEFL-104-S08-N350	Push and pull manual override
CE001810	CEFS-010-SEFG-104-S08-N350	Push pull and twist manual override