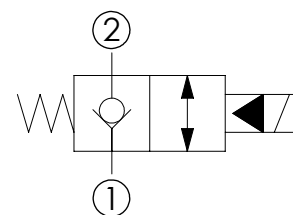
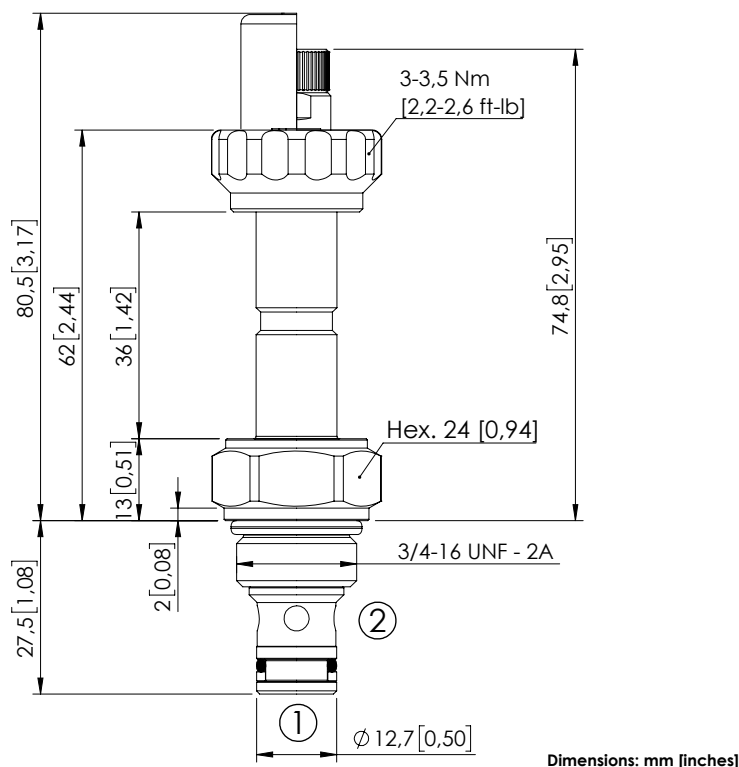


SOLENOID OPERATED CARTRIDGE

CEBE-040-NCFN-05PILOT OPERATED
POPPET TYPE**SPECIFICATIONS**

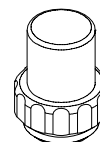
Max. operating pressure:	350 bar (5000 psi)
Rated flow:	40 l/min (11 gpm)
Cavity:	SAE-08-2N
Weight:	0,13 kg (0,29 lbs)
Min. voltage required:	90% of nominal
Coil type:	M7 or M3 type
Ambient temperature:	-20/+50 °C (-4/+122 °F)
Contamination class to ISO 4406:	See technical spec.
Seal kit:	RA900081
Installation torque:	45 - 50 Nm (33,2 - 36,9 ft-lb)
MTF _d :	150 - 1200 years: See technical spec.

NOTES

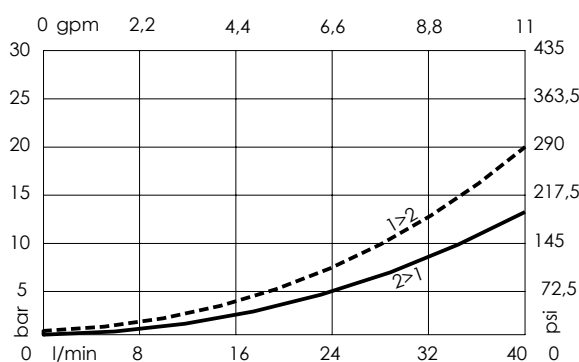
For other configurations/quick codes not available in this catalogue page please consult factory

OPTIONS

Standard

Knob style
override**SEALING CAP**

Ordering code:
AT000113

CURVES**ORDERING CODES**

Quick code	Description	Options	Max operating pressure	
CE001148	CEBE-040-NCFN-05-S08-N350	Standard	350 bar (5000 psi)	
CE001149	CEBE-040-NCFK-05-S08-N350	Knob style override	350 bar (5000 psi)	