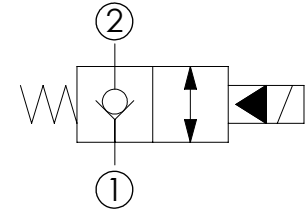
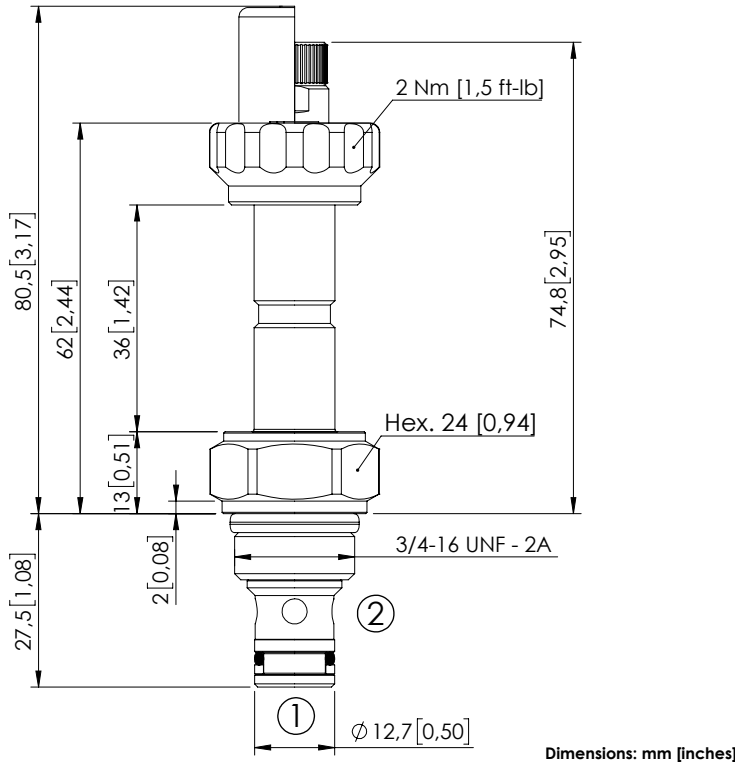


SOLENOID OPERATED CARTRIDGE

**CEBE-040-NCFN-05**

PILOT OPERATED  
POPPET TYPE



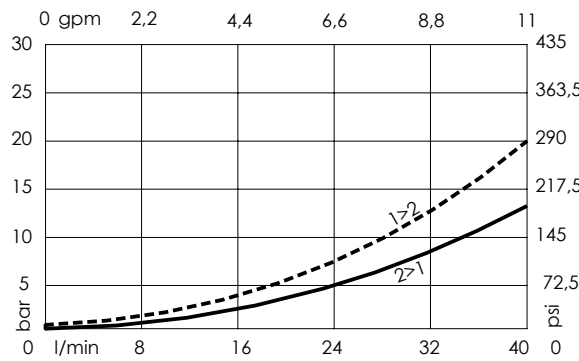
**SPECIFICATIONS**

|                                  |                                       |
|----------------------------------|---------------------------------------|
| Max. operating pressure:         | 350 bar (5000 psi)                    |
| Rated flow:                      | 40 l/min (11 gpm)                     |
| Cavity:                          | SAE-08-2N                             |
| Weight:                          | 0,13 kg (0,29 lbs)                    |
| Min. voltage required:           | 90% of nominal                        |
| Coil type:                       | M7 or M3 type                         |
| Ambient temperature:             | -20/+50 °C (-4/+122 °F)               |
| Contamination class to ISO 4406: | See technical spec.                   |
| Seal kit:                        | RA900081                              |
| Installation torque:             | 45 - 50 Nm (33,2 - 36,9 ft-lb)        |
| MTF <sub>d</sub> :               | 150 - 1200 years: See technical spec. |

**NOTES**

For other configurations/quick codes not available in this catalogue page please consult factory

**CURVES**



**OPTIONS**

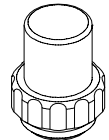
Standard



Knob style  
override



**SEALING CAP**



Ordering code:  
AT000113

**ORDERING CODES**

| Quick code | Description               | Options             | Max operating pressure |
|------------|---------------------------|---------------------|------------------------|
| CE001148   | CEBE-040-NCFN-05-S08-N350 | Standard            | 350 bar (5000 psi)     |
| CE001149   | CEBE-040-NCFK-05-S08-N350 | Knob style override | 350 bar (5000 psi)     |
|            |                           |                     |                        |
|            |                           |                     |                        |
|            |                           |                     |                        |