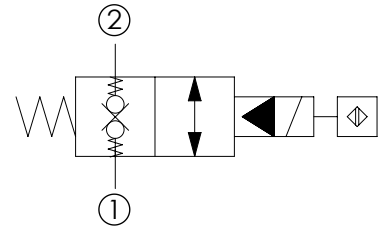
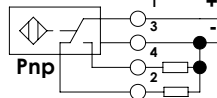
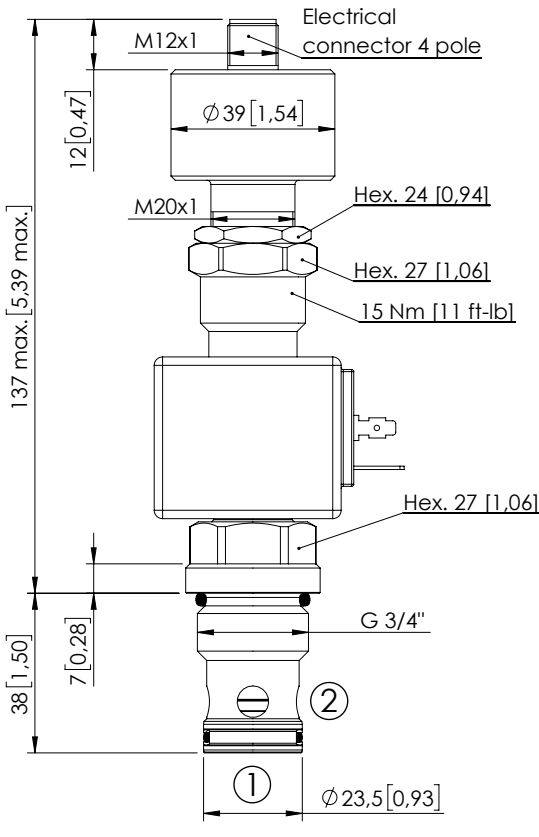


SOLENOID OPERATED CARTRIDGE

CEBN-110-XCDR

POPPET TYPE
PROXIMITY SENSOR



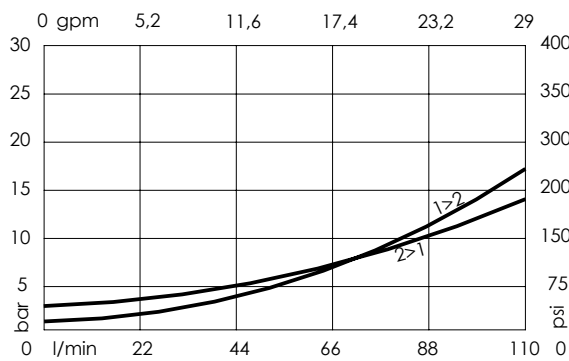
SPECIFICATIONS

Max. operating pressure:	350 bar (5000 psi)
Rated flow:	110 l/min (29 gpm)
Cavity:	VP000057
Weight:	0,61 kg (1,32 lbs)
Min. voltage required:	90% of nominal
Coil type:	M7 type
Ambient temperature:	-20/+50 °C (-4/+122 °F)
Contamination class to ISO 4406:	See technical spec.
Seal kit:	RD100057
Installation torque:	110 - 130 Nm (81 - 96 ft-lb)
MTF _d :	150 years
Operating temperature:	-25/+80°C (-13/+176 °F)

Dimensions: mm [inches]

NOTES

CURVES



ORDERING CODES

Quick code	Description	Connector	Voltage	Options
CE001100	CEBN-110-XCDR-31-057-V350-12HR	DIN 43650	12V DC	Proximity sensor
CE001101	CEBN-110-XCDR-31-057-V350-24HR	DIN 43650	24V DC	Proximity sensor